



MALTA
DYNAMICS
FALL PROTECTION & SAFETY

ABOUT US

At Malta Dynamics, we have the unique privilege of having crews in the field who actively test and use our safety equipment before we put products on the market. These field testers provide their honest opinions and feedback to help make our products as efficient and user-friendly as possible. Within this catalog you will find state-of-the-art safety products that have been meticulously designed with you in mind. We engineer, manufacture, and personally use all our safety and fall protection solutions, so when suggestions are given to us, we have the resources to modify and perfect our designs. Nobody else does safety like Malta Dynamics. We know that every jobsite may have a specific set of fall hazards to face, and we put effort into making sure the equipment we offer has been approved by the people who utilize our products most.

We trust your opinion,
so you can trust our gear!



NEW PRODUCTS

X1270 - Pg. 5



The X1270 is a road-towable, mobile fall protection anchor system for 2 workers, with an anchor height of 45' for both users. This unit provides overhead anchorage that is adjustable on-site ensuring flexibility for various job site requirements.

GEN 2 SRLS - Pgs. 18-23



The Z359.14-2014 standard for self-retracting lifelines expired in August of 2023, and is replaced with ANSI Z359.14-2021, that changes the classification and testing of all Self-Retracting Lifelines going forward.

SAFETY HELMETS - Pg. 40



The Malta Dynamics Type 2 Safety Helmets meet the ANSI standard Z89.1-2014 for Type 2 Class C Helmets.

TABLE OF CONTENTS

XSERIES MOBILE GRABBER 04

EDGE GRABBER/ENGINEERED DAVIT ANCHORS 06

HUNTER’S ELITE 08

RENTALS 10

SAFETY HARNESSES 12

HARNESS ACCESSORIES 16

SELF-RETRACTING LIFELINES 18

LANYARDS 24

VERTICAL LIFELINE ASSEMBLIES 26

CONNECTOR HARDWARE 28

ANCHORS 30

BEAM STANCHIONS 36

TRIPOD 38

PPE 40

GUARDRAIL/KITS 50

RESOURCES 51

MALTA DYNAMICS XSERIES MOBILE GRABBER

The World Leader in Mobile Fall Protection.

Engineered and tested to provide fall protection anchorage in difficult spots, our line of XSERIES towable anchors is trusted and utilized around the world to keep workers safe. Custom configurations are available.



Model	X1000	X1000E
Safety Standards		
OSHA Fall Arrest Standards		
Applicable Fall Arrest Standards set forth in ANSI Z359.6		
General		
Weight	2200 lbs.	2900 lbs.
Max. Working Height	22' (6.7m)	22' (6.7m)
Min. Working Height	17' (5.18m)	17' (5.18m)
Max. Folded Height	7'10" (2.38m)	7'10" (2.38m)
Frame Width	5'8" (1.73m)	5'8" (1.73m)
Overall Length	9'7" (2.92m)	9'7" (2.92m)
Max. Arm Reach Out	3" (.91m)	3" (.91m)
Max. Anchor Point capacity	310 lbs.	310 lbs.
Max. Allowable Users	2	2
Fluid Capacity	-	12.5 Gallons



Model	X1240	X1250	X1260	X1270
Safety Standards				
OSHA Fall Arrest Standards				
Applicable Fall Arrest Standards set forth in ANSI Z359.6				
General				
Weight	5900 lbs.	5900 lbs.	5940 lbs.	6700 lbs.
Max. Working Height	30' (9.1m)	34' (10.4m)	34' (10.4m)	45' (13.7m)
Min. Working Height	2' (.6m)	2' (.6m)	2' (.6m)	2' (.6m)
Max. Folded Height	8'1" (2.6m)	8'1" (2.6m)	8'1" (2.6m)	8'3" (2.5m)
Frame Width	5'9" (1.8m)	5'9" (1.8m)	5'9" (1.8m)	5'9" (1.8m)
Working Frame Width	5'9" (1.8m)	5'9" (1.8m)	5'9" (1.8m)	10'9" (3.3m)
Overall Length	15'6" (4.7m)	15'6" (4.7m)	15'6" (4.7m)	20'10" (6.4m)
Max. Arm Reach Out	4'5.5" (1.4m)	9'9.5" (3m)	9'9.5" (3m)	10'4" (3.1m)
Max. Anchor Point capacity	310 lbs.	310 lbs.	310 lbs.	310 lbs.
Max. Allowable Users	2	3	5	2
Fluid Capacity	12.5 Gallons	12.5 Gallons	12.5 Gallons	12.5 Gallons



MALTA DYNAMICS EDGE GRABBER

Ideal Selection for Fall Protection over Flat Rooftops.



Model	X250
Safety Standards	
OSHA Fall Arrest Standards	
Applicable Fall Arrest Standards set forth in ANSI Z359.6	
General	
Weight	2320 lbs.
Frame Width	5'6" (1.7m)
Working Frame Width	8' (2.4m)
Overall Length	13' (4m)
Max. Arm Reach Out	6'3" (1.9m)
Max. Anchor Point capacity	310 lbs.
Max. Allowable Users	2



MALTA DYNAMICS ENGINEERED DAVIT ANCHORS

Portable or Permanent, Classic Proven Design



Model	X500	X525	X550
Safety Standards			
OSHA Fall Arrest Standards			
Applicable Fall Arrest Standards set forth in ANSI Z359.6			
General			
Weight	5950 lbs.	1784 lbs.	2271 lbs.
Max. Working Height	20' (6.7m)	25' (7.6m)	22' (6.7m)
Frame Width	6' 3" (1.9m)	3' (.9m)	7'5" (2.3m)
Overall Length	13' (4m)	11' 1" (3.4m)	11' 3" (3.4m)
Max. Arm Reach Out	10' (3m)	9'7" (2.92m)	7'6" (2.3m)
Max. Anchor Point capacity	310 lbs.	310 lbs.	310 lbs.
Max. Allowable Users	1	1	1



MALTA DYNAMICS HUNTER'S ELITE

Tree stand safety you can trust and wear all day.

We've taken our expertise in Fall Protection and applied it to our passion of hunting. The Hunter's Elite line represents the most premium and comfortable treestand safety products on the market.



HUNTER'S ELITE HUNTING HARNESS KIT



KEY FEATURES:

- Lumbar Support Belt Included
- Shock Absorbing Tether Attached
- Sewn-in Lineman's Climbing Strap Loops
- MOLLE Webbing on Back of Lumbar Support for Bag Attachment
- Two Built-in Gear Lanyards
- Quick Connect Chest and Leg Buckles for Fast and Easy Adjustments

PART #	PATTERN	SIZE	WEIGHT
HE2200	Kanati	S-M	4.6 lbs.
HE2201	Kanati	L-XL	4.7 lbs.
HE2202	Kanati	2XL	4.8 lbs.
HE2203	Kanati	3XL	4.9 lbs.
HE3200	Strata	S-M	4.6 lbs.
HE3201	Strata	L-XL	4.7 lbs.
HE3202	Strata	2XL	4.8 lbs.
HE3203	Strata	3XL	4.9 lbs.

The Hunter's Elite Harness from Malta Dynamics is crafted with the avid hunter in mind. This harness features Strata or Kanati camouflage pattern options from TrueTimber. To keep you comfortable and quiet for hours, this harness has been fitted with silent padding on the shoulders, legs, back, and waist. The buckles on the Hunter's Elite stay silent while you move because we've incorporated elastic band coverings for the metal components to eliminate noise.

PRODUCT SPECIFICATIONS:

- Max User Weight Capacity: 300 lbs.
- Materials: Nylon, Polyester & Steel
- Kit Includes: Tree Strap, Lineman's Climbing Strap, & Deer Drag/Suspension Relief Strap



HUNTER'S ELITE ULTRALIGHT HARNESS KIT



KEY FEATURES:

- Shock Absorbing Tether Attached
- Sewn-in Lineman's Climbing Strap Loops
- Two Built-in Gear Lanyards
- Quick Connect Chest and Leg Buckles for Fast and Easy Adjustments
- Ultralight-Weight

PART #	PATTERN	SIZE	WEIGHT
HE2100	Kanati	S-M	2.4 lbs.
HE2101	Kanati	L-XL	2.5 lbs.
HE2102	Kanati	2XL	2.6 lbs.
HE2103	Kanati	3XL	2.7 lbs.
HE3100	Strata	S-M	2.4 lbs.
HE3101	Strata	L-XL	2.5 lbs.
HE3102	Strata	2XL	2.6 lbs.
HE3103	Strata	3XL	2.7 lbs.

The Hunter's Elite Ultralight is the safety harness you don't notice you have on. The minimalistic design still features premium breathable padding on the back, shoulders, and legs, with 1" webbing, connected by aluminum quick-connect buckles.

PRODUCT SPECIFICATIONS:

- Max User Weight Capacity: 300 lbs.
- Materials: Nylon, Polyester & Steel
- Kit Includes: Tree Strap, Lineman's Climbing Strap, & Deer Drag/Suspension Relief Strap



HUNTER'S ELITE ULTRALIGHT YOUTH HARNESS



KEY FEATURES:

- Shock Absorbing Tether Attached
- Sewn-in Lineman's Climbing Strap Loops
- Two Built-in Gear Lanyards
- Quick Connect Chest and Leg Buckles for Fast and Easy Adjustments
- Ultralight-Weight

PART #	PATTERN	WEIGHT
HE2104	Kanati	2.3 lbs.
HE3104	Strata	2.3 lbs.

The Youth Hunter's Elite Ultralight is the safety harness you don't notice you have on. The minimalistic design still features premium breathable padding on the back, shoulders, and legs, with 1" webbing, connected by aluminum quick-connect buckles.

PRODUCT SPECIFICATIONS:

- Max User Weight Capacity: 300 lbs.
- Materials: Nylon, Polyester & Steel
- Kit Includes: Tree Strap, Lineman's Climbing Strap, & Deer Drag/Suspension Relief Strap



HUNTING VERTICAL LIFELINE ASSEMBLY



KEY FEATURES:

- Reflective material that lights up with the slightest beam of light.
- Accommodate stands up to 25 feet
- Includes carabiner
- Pre-installed prusik knot

The 30' Hunting Vertical Lifeline features reflective material that shines with the slightest beam to locate your stand in low-light conditions. All hunting lifelines come with a carabiner. Once installed properly, the lifeline keeps you connected from the ground to the stand and back again.

PRODUCT SPECIFICATIONS:

- Capacity: 300 lbs.
- Materials: Steel & Polyester



HUNTER'S ELITE HARNESS ACCESSORIES



KEY FEATURES:

- D-Rings: Back & Sides
- Break Away Lanyard Keepers
- Fall Indicator
- Finished Webbing Ends

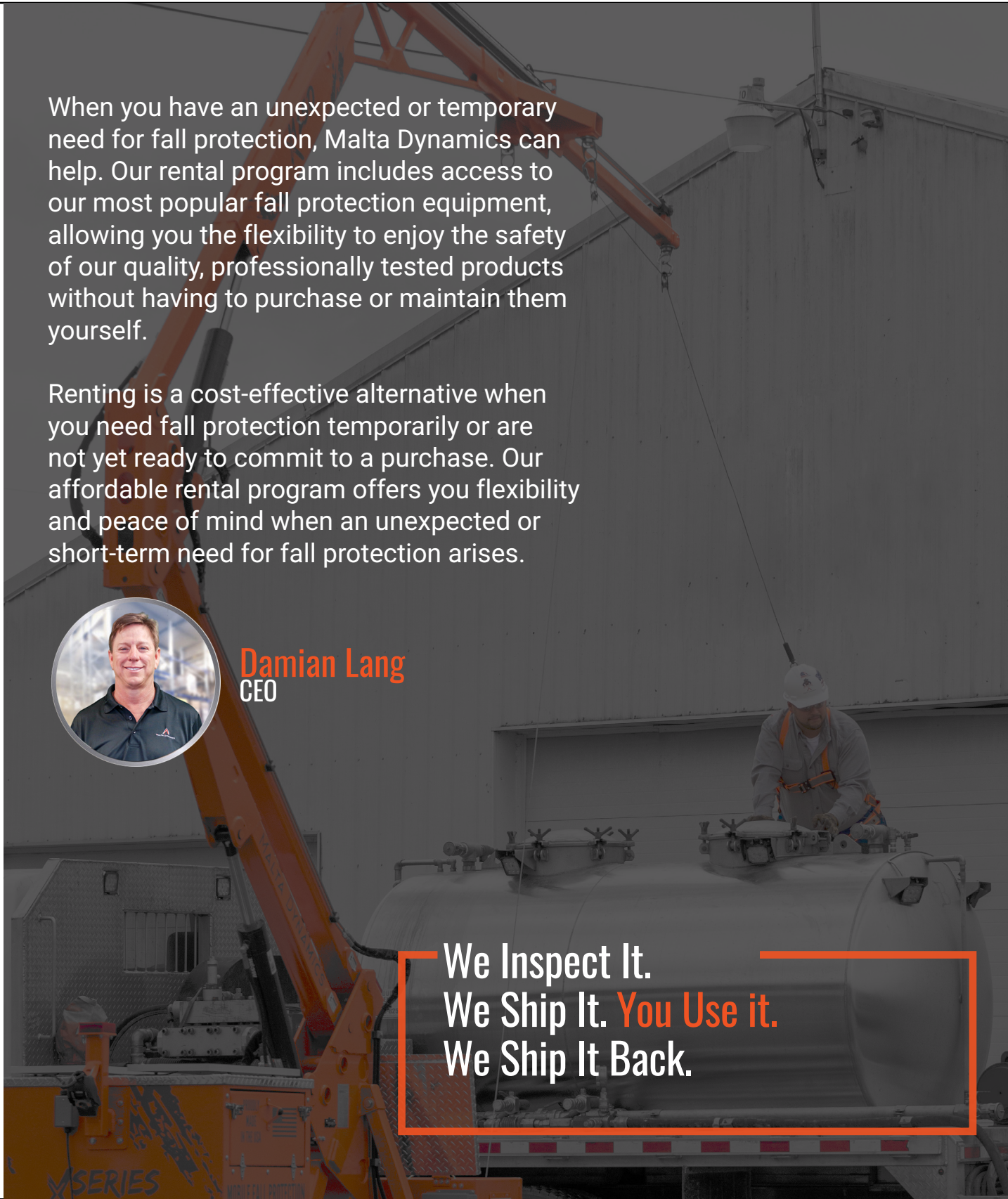
We have all the accessories needed to complete your kit; lineman's climbing strap, tree strap, and deer drag/suspension relief strap, all expertly crafted to stand up to provide safety and stealth. All of these accessories should be used together to make sure all your stands are equally protected.

PART #	ACCESSORY	WEIGHT
HEA1000	Tree Strap	.6 lbs.
HEA2000	Lineman's Climbing Strap	1.5 lbs.
HEA3000	Deer Drag/Suspension Relief Strap	.3 lbs.



MALTA DYNAMICS RENTAL PROGRAM

When an unexpected or temporary need for fall protection arises, Malta Dynamics can help.



When you have an unexpected or temporary need for fall protection, Malta Dynamics can help. Our rental program includes access to our most popular fall protection equipment, allowing you the flexibility to enjoy the safety of our quality, professionally tested products without having to purchase or maintain them yourself.

Renting is a cost-effective alternative when you need fall protection temporarily or are not yet ready to commit to a purchase. Our affordable rental program offers you flexibility and peace of mind when an unexpected or short-term need for fall protection arises.



Damian Lang
CEO

We Inspect It.
We Ship It. **You Use it.**
We Ship It Back.

RENTALS MADE EASY



BENEFITS OF RENTING

- Quick access to fall protection to remain compliant with OSHA standards
- Save money over purchasing
- Receive equipment that has been pre-inspected and is ready to use immediately
- Rentals may qualify as a deductible operating expense
- No commitment—keep your equipment as long as you need it and return it when finished
- Guarantee that all equipment is professionally tested and maintained

PRICING

Pricing for rentals is based on how long you keep the equipment to use. We begin your rental fee from the day the product reaches the shipping location you specify. Your rental charges stop on the day the equipment is returned to Malta Dynamics.

MORE INFORMATION



Please contact us with questions or for more information about our rental program. We look forward to answering your questions and helping you with your fall protection needs.



MALTA DYNAMICS SAFETY HARNESSES

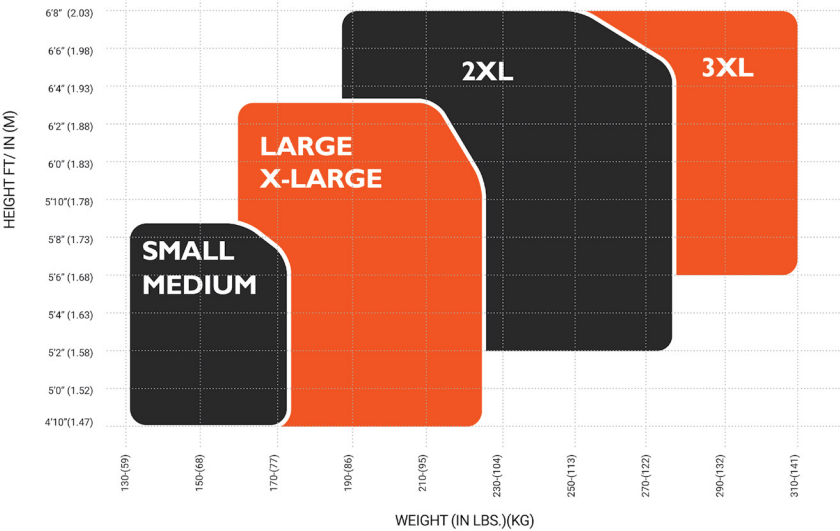
Protect Your Valued Workers With Malta Dynamics' Cutting-Edge Full Body Harnesses

Malta Dynamics offers a wide variety of harnesses that include D-ring configurations for all applications, including fall arrest, positioning, fixed ladders, and confined-space rescue, entry, and retrieval.



MALTA DYNAMICS HARNESS SIZING CHART

Belt Size	Waist Measurement
S-M	22" - 46"
L-XL	26" - 49"
2XL	30" - 52"
3XL	30" - 53"



WARTHOG TONGUE & BUCKLE HARNESS



KEY FEATURES:

- D-Rings: Back
- Break Away Lanyard Keepers
- Fall Indicator
- Finished Webbing Ends

PART #	SIZE	WEIGHT
B2006	S-M	3 lbs.
B2002	L-XL	3.1 lbs.
B2003	2XL	3.3 lbs.
B2004	3XL	3.8 lbs.

The Warthog Full-Body Harness with Tongue Buckle Legs is the best available economy harness on the market. Because the Warthog Safety Harness is constructed with a one-piece structure, you can trust it will stay in place without slipping. It features leg connections that can be easily adjusted and tightened to help you achieve the perfect fit.

PRODUCT SPECIFICATIONS:

- ANSI Capacity Range: 130-310 lbs.
- Static Strength: 3,600 lbs.
- Materials: Nylon, Polyester & Steel



WARTHOG TONGUE & BUCKLE W/X-PAD



KEY FEATURES:

- D-Rings: Back
- Removable Back Pad
- Break Away Lanyard Keepers
- Fall Indicator
- Finished Webbing Ends

PART #	SIZE	WEIGHT
B2006-X	S-M	3.9 lbs.
B2002-X	L-XL	3.9 lbs.
B2003-X	2XL	4 lbs.
B2004-X	3XL	4 lbs.

The Malta Dynamics Warthog Full-Body Harness comes with the special X-Pad as a standard accessory. The X-Pad Back Pad is a great comfort accessory for your harness, enhancing worker satisfaction, productivity and compliance. The X-Pad provides extra comfort throughout the neck, shoulders and back.

PRODUCT SPECIFICATIONS:

- ANSI Capacity Range: 130-310 lbs.
- Static Strength: 3,600 lbs.
- Materials: Nylon, Polyester & Steel



WARTHOG PASS-THRU HARNESS



KEY FEATURES:

- D-Rings: Back
- Break Away Lanyard Keepers
- Fall Indicator
- Finished Webbing Ends

PART #	SIZE	WEIGHT
B2007	S-M	2.7 lbs.
B2000	L-XL	2.8 lbs.
B2001	2XL	3 lbs.
B2005	3XL	3.3 lbs.

The Malta Dynamics Warthog Full-Body Harness with Pass-Thru Leg Buckles is the best available economy harness on the market. You'll get functional and efficient features at an affordable rate.

PRODUCT SPECIFICATIONS:

- ANSI Capacity Range: 130-310 lbs.
- Static Strength: 3,600 lbs.
- Materials: Polyester and Steel



WARTHOG SIDE D-RING HARNESS



KEY FEATURES:

- D-Rings: Back & Sides
- Break Away Lanyard Keepers
- Fall Indicator
- Finished Webbing Ends

PART #	SIZE	WEIGHT
B1101	S-M	4 lbs.
B1102	L-XL	4 lbs.
B1103	2XL	4.1 lbs.

The Warthog Full-Body Universal Harness with Side D-Rings — you can feel confident working at elevated heights with positioning devices (C7900 - Rebar Chain Assembly). It features leg connections that can be easily adjusted and tightened to help you achieve the perfect fit.

PRODUCT SPECIFICATIONS:

- ANSI Capacity Range: 130-310 lbs.
- Static Strength: 3,600 lbs.
- Materials: Polyester and Steel



MALTA DYNAMICS SAFETY HARNESSES

Protect Your Valued Workers With Malta Dynamics' Cutting-Edge Full Body Harnesses

Malta Dynamics offers a wide variety of harnesses that include D-ring configurations for all applications, including fall arrest, positioning, fixed ladders, and confined-space rescue, entry, and retrieval.



WARTHOG MAXX SIDE D-RING HARNESS



KEY FEATURES:

- D-Rings: Back & Sides
- Quick-Connect Chest Buckle
- Break Away Lanyard Keepers
- Waist Belt
- Finished Webbing Ends

The Warthog® MAXX Construction Full Body Harness is designed to help protect workers in heavy duty trades. With features like additional adjustability, a padded waist belt, side positioning D-Rings, and quick disconnect chest buckle, it's easy to see why it is the most cost effective harness of its class.

PART #	SIZE	WEIGHT
B2101	S-M	5 lbs.
B2102	L-XL	5.1 lbs.
B2103	2XL	5.2 lbs.
B2104	3XL	5.4 lbs.

PRODUCT SPECIFICATIONS:

- ANSI Capacity Range: 130-310 lbs.
- Static Strength: 3,600 lbs.
- Materials: Nylon, Polyester & Steel



COMFORT MAXX HARNESS



KEY FEATURES:

- D-Rings: Back & Sides
- Quick-Connect Chest & Leg Buckles
- Break Away Lanyard Keepers
- Fall Indicator
- Finished Webbing Ends

The Warthog® MAXX "Comfort" Construction Harness with Removable Belt, Side D-Rings and additional Padding combines 100% safety compliance with the ultimate in comfort — padding on the shoulders, back, waist and legs.

PART #	SIZE	WEIGHT
B2201	S-M	6 lbs.
B2202	L-XL	6.1 lbs.
B2203	2XL	6.3 lbs.
B2204	3XL	6.44 lbs.

PRODUCT SPECIFICATIONS:

- ANSI Capacity Range: 130-310 lbs.
- Static Strength: 3,600 lbs.
- Materials: Nylon, Polyester & Steel



COMFORT MAXX STEEL HARNESS



KEY FEATURES:

- D-Rings: Back & Sides
- Quick-Connect Chest & Leg Buckles
- Sewn in lumbar support
- Custom standing D-Ring
- Trauma Relief Strap Included

A steelworker inspired version of our best-selling Comfort Maxx, this all-new harness features upgrades to the belt so it better handles popular tool bags, a higher D-ring and dual lifeline attachment point to lessen strain on the lower back, and a pre-installed trauma relief strap. Combine these features with the comfort and durability of the original, and its own unique color-scheme, the Comfort Maxx Steel is sure to be a favorite for all industries.

PART #	SIZE	WEIGHT
B2301	S-M	6.8 lbs.
B2302	L-XL	6.9 lbs.
B2303	2XL	7 lbs.
B2304	3XL	7.1 lbs.

PRODUCT SPECIFICATIONS:

- ANSI Capacity Range: 130-310 lbs.
- Static Strength: 3,600 lbs.
- Materials: Nylon, Polyester & Steel



RAZORBACK ELITE STERNAL



KEY FEATURES:

- D-Rings: Sternal, Back & Sides
- Built-In Rescue Handles
- Quick-Connect Buckles
- All Aluminum Hardware
- Lightweight, Breathable Padding

The Razorback Elite MAXX safety harness was designed to be one of the lightest weight safety harnesses available with all of the features you need to work in any situation, including climbing via sternal D-Ring.

PART #	SIZE	WEIGHT
B4000	S-M	3.3 lbs.
B4001	L-XL	3.5 lbs.
B4002	2XL	3.7 lbs.
B4003	3XL	3.9 lbs.

PRODUCT SPECIFICATIONS:

- ANSI Capacity Range: 130-310 lbs.
- Static Strength: 3,600 lbs.
- Materials: Nylon, Polyester & Aluminum



RAZORBACK ELITE MAXX STERNAL



KEY FEATURES:

- D-Rings: Sternal, Back & Sides
- Built-In Rescue Handles
- Quick-Connect Buckles
- All Aluminum Hardware
- Sewn-In Waist Belt

The Malta Dynamics Razorback Elite MAXX Sternal D-Ring Harness is designed to prepare your crew for any job at heights, including tower and fixed ladder climbing. This sternal D-Ring harness will deliver functionality and innovation with a lightweight design that makes it easy to wear all day on any job.

PART #	SIZE	WEIGHT
B4200	S-M	4.7 lbs.
B4201	L-XL	4.9 lbs.
B4202	2XL	5 lbs.
B4203	3XL	5.2 lbs.

PRODUCT SPECIFICATIONS:

- ANSI Capacity Range: 130-310 lbs.
- Static Strength: 3,600 lbs.
- Materials: Nylon, Polyester & Aluminum



JAVELINA HARNESS



KEY FEATURES:

- D-Rings: Back
- Break Away Lanyard Keepers
- Quick-Connect Chest Buckle
- Tongue and Buckle Leg Buckles
- Aluminum Hardware

The Javelina Full Body Harness has everything you need, and nothing you don't. All hardware and fabric are of highest quality. This harness blends basic functionality and high quality components.

PART #	SIZE	WEIGHT
B4300	S-M	3.2 lbs.
B4301	L-XL	3.3 lbs.
B4302	2XL	3.4 lbs.
B4303	3XL	3.5 lbs.

PRODUCT SPECIFICATIONS:

- ANSI Capacity Range: 130-310 lbs.
- Static Strength: 3,600 lbs.
- Materials: Polyester & Aluminum



MALTA DYNAMICS HARNESS ACCESSORIES

Make your harness more functional or comfortable.



HARNESS X-PAD



KEY FEATURES:

- Compact and lightweight design
- Easy attachment to harnesses with hook and loop fasteners
- "X" design fits all Malta Dynamics harnesses as well as many other makes and models
- Provides added comfort
- Easy removal for cleaning

The Malta Dynamics X-Pad is crafted with top quality high strength polyester to keep the padding comfortable, breathable, and durable. The X-Pad is easily put in place on your harness with the help of our heavy-duty hook and loop fasteners. Each pad can also be removed for cleaning or for transfer to another full body harness.

PART #	WEIGHT
B0001	.2 lbs.

PRODUCT SPECIFICATIONS:

- Materials: Polyester



HARNESS PADS (PAIR)



KEY FEATURES:

- Compact and lightweight design
- Provides added comfort
- Easy attachment to harnesses
- Adds next-level comfort to all Malta Dynamics harnesses
- Easy removal for cleaning
- Breathable design

The Harness Pads are for attachment to a harness and operate in combination with the other parts of the system. Upgrade your comfort on the jobsite with our cushioned leg and/or shoulder pads.

PART #	WEIGHT
B0002	.3 lbs.
B0003	.3 lbs.

PRODUCT SPECIFICATIONS:

- Materials: Polyester



HARNESS WAIST BELT W/PAD



KEY FEATURES:

- Compact and lightweight design
- Provides added comfort
- Easy attachment to harnesses
- Adds next-level comfort to all Malta Dynamics harnesses
- Easy removal for cleaning
- Breathable design

Add some stability and comfort to your basic harness with our padded waist belt.

PART #	SIZE	WEIGHT
B0004	S-M-L	.5 lbs.
B0005	XL-2XL	.8 lbs.

PRODUCT SPECIFICATIONS:

- Materials: Polyester and Steel



HARNESS TOOLBAG



KEY FEATURES:

- Easily hangs on tool belt for easy access
- Lightweight
- Securely attaches tools to harness belt
- Does Not Hinder the Activity of Worker
- Durable double bottom
- 2 Bull-pin loops

Malta Dynamics Harness Toolbag – lightweight, durable, and always within reach. Easily hanging on your tool belt, it securely attaches tools to your harness, streamlining your tasks without hindrance. With a robust double bottom and two Bull-pin loops, this compact solution ensures efficiency and safety at every height.

PART #	WEIGHT
TB1000	.7 lbs.

PRODUCT SPECIFICATIONS:

- Materials: Canvas



SUSPENSION TRAUMA RELIEF STRAP



KEY FEATURES:

- Wider Strap Accommodates Work Boots and Helps Ideal Foot Placement
- Quick Connect for Fast and Easy Use
- Compact and Lightweight
- Pre-Adjustable and Ready to Use Immediately
- Does Not Hinder the Activity of Worker

The Suspension Trauma Relief Strap is a premium trauma strap designed to reduce the forces effects of prolonged fall suspension. The newly designed Malta Dynamics suspension trauma relief strap can be attached to most full body harness makes and models available on the market today.

PART #	DIMENSIONS	WEIGHT
R0005	9" x 2" x 2"	.9 lbs.

PRODUCT SPECIFICATIONS:

- Worker Capacity Range: 130-310 lbs.
- Materials: Polyester, Nylon, and Galvanized Steel



TOOL LANYARD



KEY FEATURES:

- Safety Green and Orange
- Helps reduce falling object related injuries
- Securely attaches tools to harness, wrist, or tool belt
- Provides high visibility, ease of use, and versatility

The Malta Dynamics Tool Lanyard features a lightweight, aluminum alloy screw lock mini carabiner for attachment to your harness or tool belt. This tool lanyard extends to 53" and sits in a relaxed position at 32". Tool lanyards prevent hand tools from becoming falling objects on the jobsite.

PART #	WEIGHT
C1006	.2 lbs.

PRODUCT SPECIFICATIONS:

- Max. Tool Weight Support: 15 lbs.
- Screw Lock Carabiner: Aluminum Alloy
- Materials: 75" W-Tubular Polyester



MALTA DYNAMICS LEADING EDGE SRLS

Protect yourself properly with lifelines designed and tested at below D-Ring anchorage.

Is your anchorage at or below your D-Ring? Could your fall cause your SRL cable to come in contact with another object? If yes, Leading Edge rated devices are what your crew needs. Not sure? Call one of our experts at 1-800-494-1840



6' PERSONAL LEADING EDGE SRL



KEY FEATURES:

- Galvanized Steel LE Approved Cable
- Backpack Style Energy Absorber
- Durable Housing
- Rubber Ergonomic Handle
- 360° Swivel Connector
- Provides maximum comfort and safety

The Malta Dynamics' Leading Edge SRLs provide you and your workers with foot level tie-off and sharp edge applications. This compact and lightweight Leading Edge SRL offers a quick-action braking system, swivel top and slide lifeline exit with a rubber ergonomic handle.

PRODUCT SPECIFICATIONS:

- Meets ANSI Z359.14-2021 Class 2 Requirements
- Worker Capacity Range: 130-310 lbs.
- Average Arresting Force: 1,350 lbs.
- Materials: Galvanized & Alloy Steel, Polymer

PART #	HOOK	PACK	WEIGHT
LE3261	Snap	Single	4.21 lbs.
LE3261D	Snap	Dual	7.47 lbs.
LE3263	Rebar	Single	4.21 lbs.
LE3263D	Rebar	Dual	7.47 lbs.



10' PERSONAL LEADING EDGE SRL



KEY FEATURES:

- Galvanized Steel LE Approved Cable
- Backpack Style Energy Absorber
- Durable Housing
- Rubber Ergonomic Handle
- 360° Swivel Connector
- Provides maximum comfort and safety

The Malta Dynamics' Leading Edge SRLs provide you and your workers with foot level tie-off and sharp edge applications. This compact and lightweight Leading Edge SRL offers a quick-action braking system, swivel top and slide lifeline exit with a rubber ergonomic handle.

PRODUCT SPECIFICATIONS:

- Meets ANSI Z359.14-2021 Class 2 Requirements
- Worker Capacity Range: 130-310 lbs.
- Average Arresting Force: 1,350 lbs.
- Materials: Galvanized & Alloy Steel, Polymer

PART #	HOOK	PACK	WEIGHT
LE3311	Snap	Single	4.21 lbs.
LE3311D	Snap	Dual	7.47 lbs.
LE3313	Rebar	Single	4.21 lbs.
LE3313D	Rebar	Dual	7.47 lbs.



LEADING EDGE SRL



KEY FEATURES:

- 360° Swivel Top Connection Point
- Built-In-Easy-Carry Handle
- Built-in Strike Test Grip
- Integral and External Shock Energy Absorption System
- Self-locking Alloy Steel Snap Hook

PART #	LENGTH	WEIGHT
LE7020-G2	20'	9.3 lbs.
LE7030-G2	30'	9.9 lbs.
LE7050-G2	50'	15.6 lbs.

Working with leading edges is daunting and having the proper protection is essential to worker well being. The Malta Dynamics Leading Edge SRL offers dependable performance and features an integral shock absorber to reduce the force on the body if a fall occurs.

PRODUCT SPECIFICATIONS:

- Meets ANSI Z359.14-2021 Class 2 Requirements
- Worker Capacity Range: 130-310 lbs.
- Average Arresting Force: 1,350 lbs.
- Materials: Galvanized & Alloy Steel, Polymer



MALTA DYNAMICS OVERHEAD CABLE SRLS

Protect yourself properly with lifelines designed and tested for short stopping distances and low arresting force.

Retracts, yo-yo's, lifelines, SRLs... No matter what you call them, we've got the best in the industry. Count on a durable, well-designed lifeline for every situation.



90' WARTHOG SRL



KEY FEATURES:

- 360° Swivel Top Connection Point
- Galvanized Steel Cable
- Built-In Strike Test Grip
- Self-Locking Snap Hook
- Carabiner and Tag Line Included
- Lightweight and Durable Housing
- For Overhead Use Only

The Malta Dynamics Warthog Series Self-Retracting Lifeline are some of the most durable SRLs available on the market today. The lightweight housing is made from high-strength thermoplastic polymer and features a galvanized steel lifeline cable with a self-locking alloy steel snap hook.

PRODUCT SPECIFICATIONS:

- Meets ANSI Z359.14-2021 Class 1 Requirements
- Worker Capacity Range: 130-310 lbs.
- Max. Arresting Distance: 42 in.
- Max. Arresting Force: 1,800 lbs.
- Average Arresting Force: 900 lbs.
- Materials: Galvanized Steel, Alloy Steel, Polymer

PART #	LENGTH	WEIGHT
C7003-G2	90'	28.8 lbs.

RAZORBACK HEAVY-DUTY SRLS



KEY FEATURES:

- 360° Swivel Top
- Built-In-Easy-Carry Handle
- Durable Aluminum Housing
- Galvanized Steel Cable
- Carabiner and Tag Line Included
- For overhead use only
- Convenient Carry Handle

The Malta Dynamics Razorback™ Heavy-Duty SRL has been engineered to be the TOUGHEST SRL on the market. This is the ultimate work SRL and an impressive piece of equipment to trust your safety to. Built tough with rugged capability, the Razorback™ provides outstanding performance and is the most durable SRL on the market.

PRODUCT SPECIFICATIONS:

- Meets ANSI Z359.14-2021 Class 1 Requirements
- Worker Capacity Range: 130-310 lbs.
- Max. Arresting Distance: 24 in.
- Max. Arresting Force: 1,600 lbs.
- Average Arresting Force: 1,100 lbs.
- Materials: Galvanized & Alloy Steel, Aluminum

PART #	LENGTH	WEIGHT
C8000-G2	20'	14.9 lbs.
C8001-G2	30'	15.5 lbs.

HYBRID HOG SRLS



KEY FEATURES:

- 360° Swivel Top Connection Point
- Galvanized Steel Cable
- Self-Locking Snap Hook
- Carabiner and Tag Line Included
- Lightweight and Durable Housing
- For Overhead Use Only
- Convenient Carry Handle

The Malta Dynamics Hybrid Hog is a SRL engineered with the worker in mind. We've expertly designed one SRL that meets the rigorous standards of both OSHA and ANSI for SRL Class 1. A lower maximum arresting force significantly improves the safety factor of the device.

PRODUCT SPECIFICATIONS:

- Meets ANSI Z359.14-2021 Class 1 Requirements
- Worker Capacity Range: 130-310 lbs.
- Max. Arresting Distance: 24 in.
- Max. Arresting Force: 1,600 lbs.
- Average Arresting Force: 1,100 lbs.
- Materials: Galvanized & Alloy Steel

PART #	LENGTH	WEIGHT
C9000-G2	20'	11.3 lbs.
C9001-G2	30'	12.1 lbs.

50' WARTHOG SRL



KEY FEATURES:

- 360° Swivel Top Connection Point
- Galvanized Steel Cable
- Built-In Strike Test Grip
- Self-Locking Snap Hook
- Carabiner and Tag Line Included
- Lightweight and Durable Housing
- For Overhead Use Only

The Malta Dynamics Warthog Series Self-Retracting Lifeline are some of the most durable SRLs available on the market today. The lightweight housing is made from high-strength thermoplastic polymer and features a galvanized steel lifeline cable with a self-locking alloy steel snap hook.

PRODUCT SPECIFICATIONS:

- Meets ANSI Z359.14-2021 Class 1 Requirements
- Worker Capacity Range: 130-310 lbs.
- Max. Arresting Distance: 24 in.
- Max. Arresting Force: 1,600 lbs.
- Average Arresting Force: 1,100 lbs.
- Materials: Galvanized Steel, Alloy Steel, Polymer

PART #	LENGTH	WEIGHT
C7002-G2	50'	14.6 lbs.

MALTA DYNAMICS WEB SRLS

Personal Overhead lifelines, lightweight design for all day use.

Retracts, yo-yo's, lifelines, SRLs... No matter what you call them, we've got the best in the industry. Count on a durable, well-designed lifeline for every situation.



6' PYGMY HOG SRL



KEY FEATURES:

- For overhead use only
- Carabiner included
- Lightweight and durable
- Fits in the palm of your hand
- 360° swivel top connector
- Side lifeline exit for smooth payout and retraction

The Pygmy Hog 6' Self-Retracting Lifeline is a Web SRL that is manufactured from non-corrosive, lightweight components and a durable housing. The Pygmy Hog® is built to work as a single unit or in a kit of two with the user wearing both units at once. This high-quality equipment is a must-have for your jobsite.

PRODUCT SPECIFICATIONS:

- Meets ANSI Z359.14-2021 Class 1 Requirements
- Worker Capacity Range: 130-310 lbs.
- Max. Arresting Distance: 28 in.
- Max. Arresting Force: 1,600 lbs.
- Average Arresting Force: 1,100 lbs.
- Materials: Alloy Steel, Polyester, Polymer

PART #	HOOK	PACK	WEIGHT
C7102-G2	Snap	Single	2.4 lbs.
C7102D-G2	Snap	Dual	5.4 lbs.
C7104-G2	Rebar	Single	3.3 lbs.
C7104D-G2	Rebar	Dual	7.2 lbs.



11' PYGMY HOG SRL



KEY FEATURES:

- For overhead use only
- Carabiner included
- Lightweight and durable
- Fits in the palm of your hand
- 360° swivel top connector
- Side lifeline exit for smooth payout and retraction

The Pygmy Hog 11' Self-Retracting Lifeline is a Web SRL that is manufactured from non-corrosive, lightweight components and a durable housing. The Pygmy Hog® is built to work as a single unit or in a kit of two with the user wearing both units at once. This high-quality equipment is a must-have for your jobsite.

PRODUCT SPECIFICATIONS:

- Meets ANSI Z359.14-2021 Class 1 Requirements
- Worker Capacity Range: 130-310 lbs.
- Max. Arresting Distance: 42 in.
- Max. Arresting Force: 1,600 lbs.
- Average Arresting Force: 1,100 lbs.
- Materials: Alloy Steel, Polyester, Polymer

PART #	HOOK	PACK	WEIGHT
C7201-G2	Snap	Single	3.9 lbs.
C7201D-G2	Snap	Dual	8.4 lbs.
C7203-G2	Rebar	Single	4.3 lbs.
C7203D-G2	Rebar	Dual	9.2 lbs.



MALTA DYNAMICS LANYARDS

Easy to use and inspect, every hook size you need.

Tried and true, shock-absorbing lanyards have been protecting workers from falls for decades. We have lanyards for fall arrest and fall restraint, dual leg, single leg, big hooks, and small hooks. Find the right lanyard for your job below.



6' SINGLE LEG EXTERNAL LANYARD



KEY FEATURES:

- 1" Polyester Webbing
- Clear Shock Pack for Easy Inspection
- Vibrant orange color provides high visibility
- Lightweight and durable

Malta Dynamics 6' Single Leg External Shock Absorbing Lanyard with 2 Steel Snap Hooks meets ANSI Z359.13-2013. The integrated external shock absorbing pack component limits the average arresting force to 900 pounds or less. It is comprised of 1 inch polyester webbing and two (2) steel snap hooks.

PRODUCT SPECIFICATIONS:

- Worker Capacity Range: 130-310 lbs.
- Gate Strength: 3,600 lbs.
- Materials: Alloy Steel & Polyester



PART #	HOOKS	WEIGHT
C5000	Snap	2.5 lbs.

6' SINGLE LEG INTERNAL LANYARD



KEY FEATURES:

- 1" Polyester Webbing
- Vibrant orange color provides high visibility
- Lightweight and durable

Malta Dynamics 6' Single Leg Internal Shock Absorbing Lanyard with 2 Steel Snap Hooks limits average arresting force to 900 pounds or less. It is comprised of 1 inch polyester webbing and two steel snap hooks. The shock absorption is built directly into the lanyard making the internal shock lanyard a particularly lightweight option.

PRODUCT SPECIFICATIONS:

- Worker Capacity Range: 130-310 lbs.
- Gate Strength: 3,600 lbs.
- Materials: Alloy Steel & Polyester



PART #	HOOKS	WEIGHT
C5004	Snap	2.3 lbs.

4.5' - 6' SINGLE STRETCH LEG LANYARD



KEY FEATURES:

- Lightweight and durable
- Lanyard stretch helps reduce potential tripping hazards
- Vibrant orange color provides high visibility
- 1" polyester web

Malta Dynamics 4.5' - 6' Single Leg Stretch Internal Shock Absorbing Lanyard with 1 Rebar Hook and 1 Steel Snap Hook is specifically designed to help reduce the hazards of tripping or catching on nearby machinery found on many of today's industrial and construction sites. This lanyard is ideal for work in tight spaces and around machinery. This lanyard is designed to stretch from 4.5 feet when at rest out to 6 feet when needed.

PRODUCT SPECIFICATIONS:

- Worker Capacity Range: 130-310 lbs.
- Gate Strength: 3,600 lbs.
- Materials: Alloy Steel & Polyester



PART #	HOOKS	WEIGHT
C5104	Snap	2.6 lbs.
C5115	Snap & Rebar	3.4 lbs.

4.5' - 6' DOUBLE LEG STRETCH LANYARD



KEY FEATURES:

- Lightweight and durable
- Lanyard stretch helps reduce potential tripping hazards
- Vibrant orange color provides high visibility
- 1" polyester web

Malta Dynamics 4.5' - 6' Double Leg Stretch Internal Shock Absorbing Lanyard with 3 Steel Snap Hooks is specifically designed to help reduce the hazards of tripping or catching on nearby machinery found on many of today's industrial and construction sites. This lanyard is ideal for work in tight spaces and around machinery. This lanyard is designed to stretch from 4.5 feet when at rest out to 6 feet when needed.

PRODUCT SPECIFICATIONS:

- Worker Capacity Range: 130-310 lbs.
- Gate Strength: 3,600 lbs.
- Materials: Alloy Steel & Polyester



PART #	HOOKS	WEIGHT
C5106	Snap	4.2 lbs.
C5117	Snap & Rebar	6 lbs.

RESTRAINT LANYARD



KEY FEATURES:

- Adjustable from 4' to 6'
- For Use in Restraint and Positioning Scenarios
- Single Leg Construction
- Vibrant Orange Webbing Provides High Visibility
- 2 Steel Self-Locking Snap Hooks
- UV Resistant 1" Polyester Webbing

When working in environments that require fall restraint or positioning, the Malta Dynamics Restraint Lanyard is the perfect solution. Featuring a single leg construction design, the fall restraint lanyard length easily adapts from 4' to 6'. Use with a full-body harness and restraint anchor.

PRODUCT SPECIFICATIONS:

- Worker Capacity Range: 130-310 lbs.
- Gate Strength: 3,600 lbs.
- Materials: Polyester, Alloy Steel and Nylon



PART #	HOOKS	WEIGHT
C5200	Snap	2.4 lbs.



MALTA DYNAMICS LIFELINE ASSEMBLIES

For fall restraint or fall arrest.

A lifeline assembly can be used as part of a personal fall arrest system to bring the worker's body to a safe stop if a fall occurs, but they are also used in fall restraint scenarios to actively limit the distance from an anchor that a worker can reach so that they avoid the fall hazard completely.



VERTICAL LIFELINE ASSEMBLY



KEY FEATURES:

- Built-in Rope Grab
- UV Resistant Materials
- Complete Assembly Includes: Three-Strand White Poly-Rope, Shock Pack, Positioning Device, and 18" Extension Lanyard

PART #	LENGTH	WEIGHT
C7050	50'	10.6 lbs.
C7051	25'	7.3 lbs.
C7056	100'	19.3 lbs.

The Malta Dynamics Vertical Lifeline Assembly comes complete with a 3-strand polyester rope that is reinforced and resistant to abrasions and heat. Also includes our Fall Arrestor Rope Grab. Kit comes in three lengths.

PRODUCT SPECIFICATIONS:

- Worker Capacity Range: 130-310 lbs.
- Min. Breaking Strength: 5,000 lbs.
- Materials: Polyester, Alloy Steel and Nylon



VERTICAL LIFELINE W/SNAP HOOK



KEY FEATURES:

- Durable and remains flexible
- Terminated by stitch and plastic casing
- Includes alloy steel snaphook
- UV resistant
- 5/8" Polyester 3-strand rope

PART #	LENGTH	WEIGHT
C7052	25'	4.6 lbs.
C7053	50'	7.8 lbs.

The Malta Dynamics Vertical Lifeline W/Snap Hook is resistant to rot and mildew, alkalis and most solvents. The polyester rope offers protection against abrasion and is heat resistant. It has a melting point of over 300°F. Vertical Lifelines may be used for either fall arrest or for restraint applications.

PRODUCT SPECIFICATIONS:

- Worker Capacity Range: 130-310 lbs.
- Min. Breaking Strength: 5,000 lbs.
- Materials: Polyester, Alloy Steel and Nylon



FALL ARRESTOR ROPE GRAB



KEY FEATURES:

- Durable engineering
- Removable rope grabs are easy to install
- Fits 5/8" thick safety rope
- Built-in deceleration pack

PART #	WEIGHT
C7054	2.6 lbs.

The Malta Dynamics Warthog Fall Arrestor Rope Grab is durable and built to last on the jobsite. Connection points made from galvanized steel, the product is easy to install and designed to lock automatically in the event of a fall. Malta Dynamics' Fall Arrestor Rope Grabs are 100% universal.

PRODUCT SPECIFICATIONS:

- Worker Capacity Range: 130-310 lbs.
- Min. Breaking Strength: 5,000 lbs.
- Materials: Galvanized Steel & Nylon



HORIZONTAL LIFELINE BAG



KEY FEATURES:

- Connected Tensioning Wrench
- Highly Corrosion Resistant Tensioner
- Two 6' Cross Arm Straps
- 100' High-Strength Rope
- Protection for Up to Four Workers
- Install and Remove in Minutes
- Requires No Special Tools
- Lifeline System Fits in Included Bag

PART #	DIMENSIONS	WEIGHT
HLL3001	17"x10"x12"	22.9 lbs.

Temporary horizontal lifeline is made from a high-strength poly-rope that spans between two anchor points to create an anchorage system that allows multiple workers to tie-off safely. The temporary horizontal lifeline bag comes as a complete system that includes a tensioning device, energy absorber, rope, steel O-Rings, self-locking carabiners, and cross arm straps.

PRODUCT SPECIFICATIONS:

- Worker Capacity Range: 130-310 lbs.
- Min. Breaking Strength: 5,620 lbs.
- Materials: 5/8" Double-Braided Kermantle Rope & Steel





SRL TAG LINES



KEY FEATURES:

- Easy to use
- Durable Materials
- Compact and lightweight Design

The Malta Dynamics Tag Line is made to attach to a self-retracting lifeline overhead to allow user the ability to pull the snap hook to them, while maintaining the integrity of the lifeline while not in use.

PART #	LENGTH	WEIGHT
C0001	30'	lbs.
C0002	50'	lbs.

PRODUCT SPECIFICATIONS:

- Materials: Polyester



18" D-RING EXTENDER



KEY FEATURES:

- Lightweight
- Easy access to D-Ring

The Malta Dynamics D-Ring extension can improve ease of use for fall arrest and fall restraint systems, allowing for quick attachment and release when needed. It is only intended for these two applications and is not suitable for work positioning, suspension or rescue.



PART #	DIMENSIONS	WEIGHT
C5010	18" X 2"	1.3 lbs.

PRODUCT SPECIFICATIONS:

- Worker Capacity Range: 130-310 lbs.
- Min. Breaking Strength: 5,000 lbs.
- Materials: Polyester and galvanized steel



REBAR CHAIN ASSEMBLY



KEY FEATURES:

- Swivel Rebar Hook for Tangle-Free Connection to Vertical
- 2.5" Gate Opening on Rebar Hook
- Ideal for Hands-Free Positioning
- Lightweight and Durable
- For Use in Restraint and Work Positioning Applications

The 24" rebar chain assembly is a work positioning device designed to allow workers to perform hands-free work while elevated off the ground. While still being connected to a fall arrest device, the user can attach the snap hooks to the side D-Rings on their harness, attach the rebar hook to the rebar structure, lean away from the wall and begin to work.



PART #	LENGTH	WEIGHT
C7900	24' Link Chain	5.4 lbs.

PRODUCT SPECIFICATIONS:

- Worker Capacity Range: 130-310 lbs.
- Materials: Galvanized Steel



HIGH STRENGTH STEEL LOCKING CARABINER



KEY FEATURES:

- Securely attach lanyards or lifelines to anchorages
- Heavy Duty
- Easy to use one hand operation

The High Strength Steel Locking Carabiner is designed to be durable and easy to use. Its gate is certified to withstand face and side loads up to 3,600 lbs. This carabiner is self-closing and self-locking, and can be opened with just one hand.

PART #	GATE OPENING	WEIGHT
C1000	0.84"	.58 lbs.

PRODUCT SPECIFICATIONS:

- Worker Capacity Range: 130-310 lbs.
- Min. Breaking Strength: 5,000 lbs.
- Materials: Zinc Plated Alloy Steel



TOWER HOOK CARABINER



KEY FEATURES:

- Securely attach lanyards or lifelines to anchorages
- Heavy Duty
- Easy to use one hand operation
- Includes user installed captive pin

The Tower Hook Carabiner is a larger version of the High Strength Steel Locking Carabiner. It is designed to be durable and easy to use. The wider gate allows for increased versatility

PART #	GATE OPENING	WEIGHT
C1002	1.97"	1.7 lbs.

PRODUCT SPECIFICATIONS:

- Worker Capacity Range: 130-310 lbs.
- Min. Breaking Strength: 5,000 lbs.
- Materials Zinc Plated Alloy Steel



DUAL SRL CONNECTOR



KEY FEATURES:

- Attach up to two self-retracting lifelines
- Maintain 100% Tie-Off
- Easy One-Hand Operation
- Heavy Duty Strength

The High Strength Steel Locking Carabiner is designed to be durable and easy to use. The zinc plating on this carabiner helps prolong the life of the connector and prevents rust and corrosion.

PART #	GATE OPENING	WEIGHT
C1004	2.13"	.33 lbs.

PRODUCT SPECIFICATIONS:

- Worker Capacity Range: 130-310 lbs.
- Min. Breaking Strength: 5,000 lbs.
- Materials: Zinc Plated Alloy Steel



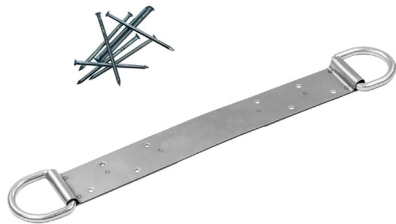
MALTA DYNAMICS ROOF ANCHORS

Keep Your Team Secure With Malta Dynamics' Roof Anchors

Roof anchors serve as a connecting point for a lifeline. At Malta Dynamics, we offer roof safety anchors that are permanent, reusable and adjustable for installing your system in various environments. Our roof anchor points are also designed for steel, wood, concrete and a diverse range of configurations, allowing you to create a dependable setup regardless of your situation.



PERMANENT ROOF ANCHOR



KEY FEATURES:

- Exclusive hole layout reduces damage to truss during install
- Reliable Stainless D-Ring anchor points
- Lightweight and durable
- Fasteners included (nails)
- Can be installed with screws or nails
- Discreet and low profile design

The Permanent Roof Anchor is designed specifically for use on wood rooftops. The anchor is manufactured to be easy to install and is ideal to place during construction.

PRODUCT SPECIFICATIONS:

- Worker Capacity Range: 130-310 lbs.
- Min. Breaking Strength: 5,000 lbs.
- Materials: Alloy & Stainless Steel



PART #	DIMENSIONS	WEIGHT
A6302	18" X 2"	.9 lbs.

REUSABLE ROOF ANCHOR



KEY FEATURES:

- Pre-drilled hole layout for easy install
- Reliable D-Ring anchor points
- Adjustable pitch to match a variety of rooftops
- Lightweight and durable
- Fasteners Included (Nails)
- Can be installed with screws or nails
- Discreet and low profile design

The Malta Dynamics Reusable Roof Anchor heavy-duty anchor with two moveable legs and a steel D-Ring. This fall protection anchor is designed for temporary use on wood rooftops and fits a range of roof pitches from flat to 12/12.

PRODUCT SPECIFICATIONS:

- Worker Capacity Range: 130-310 lbs.
- Min. Breaking Strength: 5,000 lbs.
- Materials: Galvanized Steel



PART #	DIMENSIONS	WEIGHT
A6303	21" X 3"	2.4 lbs.

4-WAY ANCHOR PLATE



KEY FEATURES:

- Easy to Install
- Lightweight
- Versatile - 4 Connection Points
- Supports 1 Worker in Fall Arrest, or 2 Workers in Restraint
- Can be Connected to Wood, Concrete, and Metal

The Malta Dynamics Multi-Directional Roof Anchor supports one worker in fall arrest or two workers in fall restraint. The four directional connection points increase the working range (when detaching and reattaching to connection points). Workers can maintain both fall arrest or fall restraint.

PRODUCT SPECIFICATIONS:

- Worker Capacity Range: 130-310 lbs.
- Min. Breaking Strength: 5,000 lbs.
- Materials: Powder Coated Steel



PART #	DIMENSIONS	WEIGHT
A6304	12" X 12"	12.4 lbs.

STANDING SEAM ROOF ANCHOR



KEY FEATURES:

- Designed to be fixed on metal standing seam roofs
- 360° swivel top connection point
- Non-penetrating design; no lasting damage to rooftop
- Removable and reusable
- Lightweight and simple to install with basic hand tools

The Malta Dynamics Standing Seam Metal Roof Anchor is compact and non-penetrating. It utilizes 8 grub screws that tighten down onto the metal roof seam. The set grub screws pinch tight on the seam to provide a reliable standing seam anchor point.

PRODUCT SPECIFICATIONS:

- Worker Capacity Range: 130-310 lbs.
- Min. Breaking Strength: 5,000 lbs.
- Materials: Aluminum alloy & stainless steel



PART #	DIMENSIONS	WEIGHT
A6317	9" x 5.5" x 3"	2.2 lbs.

ROOF ANCHOR STANDARD TOP



KEY FEATURES:

- For use on steel, concrete, or wood substrates
- Durable galvanized finish
- Great for use with retractable lifelines, vertical lifelines, or rope grab units
- Round post works with most off-the-shelf flashing kits

The Malta Dynamics Standard Roof Anchor is a fixed post roof top anchor, intended for permanent applications. It has been thoroughly tested and is compatible for installation on steel and concrete substrates. The anchor post functions to extend through roofing materials so that it is accessible both during and after roof construction.

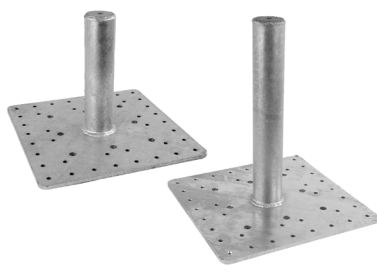
PRODUCT SPECIFICATIONS:

- Worker Capacity Range: 130-310 lbs.
- Min. Breaking Strength: 5,000 lbs.
- Materials: Galvanized Steel



PART #	HEIGHT	WEIGHT
A6300	12"	32.7 lbs.
A6301	18"	35.1 lbs.

ROOF ANCHOR THREADED TOP



KEY FEATURES:

- For use on steel, concrete, or wood substrates
- Durable galvanized finish
- Great for use with retractable lifelines, vertical lifelines, or rope grab units
- Round post works with most off-the-shelf flashing kits

The Malta Dynamics Threaded Top Roof Anchor is a fixed post rooftop anchor, intended for permanent applications. It has been thoroughly tested and is compatible for installation on steel and concrete substrates. The anchor post functions to extend through roofing materials so that it is accessible both during and after roof construction.

PRODUCT SPECIFICATIONS:

- Worker Capacity Range: 130-310 lbs.
- Min. Breaking Strength: 5,000 lbs.
- Materials: Galvanized Steel



PART #	HEIGHT	WEIGHT
A6305	12"	31.8 lbs.
A6306	18"	35.8 lbs.

MALTA DYNAMICS STEEL ANCHORS

Applications for every placement.

Not every fall hazard takes the same anchor. We have solutions for every commercial or residential application.



BEAM TROLLEY 3" - 10" 5K



KEY FEATURES:

- Can support one user in fall arrest or fall restraint applications
- Can be used overhead or at foot-level
- Free moving rollers create smooth and safe movement along the I-Beam
- Easily adjustable pins and locking toggles prevent clamp slippage

The Malta Dynamics Trolley Anchor is a top-selling option for users who need a trailing beam anchor device. This beam trolley increases mobility and productivity by saving the time it would take to connect to different anchors as a worker moves around the space. The free moving aluminum rollers are designed to smoothly glide along the I-Beam to follow the movements of the worker while remaining safely connected to the anchor.

PRODUCT SPECIFICATIONS:

- Worker Capacity Range: 130-310 lbs.
- Min. Breaking Strength: 5,000 lbs.
- Materials: Aluminum & Zinc plated & Stainless steel



PART #	BEAM FLANGE THICKNESS	WEIGHT
A6101	.25" - 8.75"	9.27 lbs.

BEAM WALKER SUPER SLIDER 3.5" - 14"



KEY FEATURES:

- 360° centered swivel D-Ring
- Adjustable hooks to custom fit range of flange width
- Adjustment nut and lock nut to secure anchor into position
- Can support one user in fall arrest or fall restraint applications
- Can be used overhead or at foot-level

The Beam Walker Super Slider is light, smooth, and easy to use. Adjustable beam walkers are designed for fall protection, rope access, and work positioning. The knurled grip on the adjusting nuts provides quick and secure adjusting.

PRODUCT SPECIFICATIONS:

- Worker Capacity Range: 130-310 lbs.
- Min. Breaking Strength: 5,000 lbs.
- Materials: Aluminum Alloy & Alloy Steel



PART #	BEAM FLANGE THICKNESS	WEIGHT
A6103	0.25" - 1.25"	3.3 lbs.

BEAM WALKER SUPER SLIDER 12" - 30"



KEY FEATURES:

- 360° centered swivel D-Ring
- Adjustable hooks to custom fit range of flange width
- Adjustment nut and lock nut to secure anchor into position
- Can support one user in fall arrest or fall restraint applications
- Can be used overhead or at foot-level

The Beam Walker Super Slider 12" - 30" is a large version fall arrest anchor designed for use on the top flange of a steel I beam. Light, smooth, and easy to use, the Beam Walker Super Slider 12" - 30" is designed for fall protection, rope access and work positioning. The knurled grip on the adjusting nuts provides quick and secure adjusting.

PRODUCT SPECIFICATIONS:

- Worker Capacity Range: 130-310 lbs.
- Min. Breaking Strength: 5,000 lbs.
- Materials: Aluminum Alloy & Alloy Steel



PART #	BEAM FLANGE THICKNESS	WEIGHT
A6104	.25" to 2.5"	7.2 lbs.

VERTICAL/FIXED BEAM ANCHOR



KEY FEATURES:

- 360° swivel D-Ring
- Adjustable paw to custom fit range of flange widths
- Adjustment nut and lock nut to secure anchor into position
- Can be used overhead or at foot-level
- Can support one user in fall arrest or fall restraint applications

The Vertical/Fixed Beam anchor can work on I-beams and H-beams. This versatile anchor features a 360-degree swivel D-Ring and accommodates up to a 2" flange thickness. The knurled grip on the adjusting nuts provides quick and secure adjusting.

PRODUCT SPECIFICATIONS:

- Worker Capacity Range: 130-310 lbs.
- Min. Breaking Strength: 5,000 lbs.
- Materials: Aluminum Alloy & Alloy Steel



PART #	BEAM FLANGE THICKNESS	WEIGHT
A6105	.5" to 2"	12.4 lbs.

5K WIRE ROPE SLING



KEY FEATURES:

- Durable & easy to use
- Steel thimble eye
- Cable resists wear around sharp edges

The 5K Wire Rope Sling is an ANSI Z359 tested anchorage connector with iridescent blue tubing for easier cable inspections. This wire rope sling can be used in a basket configuration. Cable slings are excellent temporary and semi-permanent anchors.

PRODUCT SPECIFICATIONS:

- Worker Capacity Range: 130-310 lbs.
- Min. Breaking Strength: 5,000 lbs.
- Materials: Alloy & Stainless Steel



PART #	LENGTH	WEIGHT
A6205	6'	.9 lbs.

CROSS ARM STRAPS



KEY FEATURES:

- Standard size D-Ring and large D-Ring for easy pass-thru and installation
- Malta Dynamics' signature orange color increases visibility
- Increased durability with dual reinforced webbing and heavy duty stitching

The anchorage point can be looped over a steel support beam or structural wood member. Once the small D-Ring is pulled through the pass-thru loop (the larger D-Ring), you have an anchor point that is both ANSI tested and OSHA compliant. The heavy duty wear pad protects the structural webbing against abrasion helping to increase service life.

PRODUCT SPECIFICATIONS:

- Worker Capacity Range: 130-310 lbs.
- Min. Breaking Strength: 5,000 lbs.
- Materials: Polyester and Alloy Steel



PART #	LENGTH	WEIGHT
A6350	4'	1.2 lbs.
A6351	6'	1.5 lbs.

MALTA DYNAMICS MULTI-PURPOSE AND SPECIALITY ANCHORS



PARAPET ANCHOR



KEY FEATURES:

- Non-penetrating design to eliminate parapet wall damage
- No Installation tools required- Dual tightening handles for even force distribution
- Rubber protective pads to eliminate damage to the parapet wall
- Reusable

The Malta Dynamics Parapet clamp system allows you to put your SRL in place with a sturdy connection that helps support weight and keep your workers safe. The reusable device is easy to install and won't cause damage to the wall. Your workers can use our parapet anchor on walls varying in thickness from 2.36" to 14.1".

PRODUCT SPECIFICATIONS:

- Worker Capacity Range: 130-310 lbs.
- Min. Breaking Strength: 5,000 lbs.
- Materials: Galvanized Steel



PART #	DIMENSIONS	WEIGHT
A6316	25.5"x14.25"x4"	2.4 lbs.

SINGLE USE ROOF ANCHOR



KEY FEATURES:

- Easily bends over peak of roof or lies flat to match roof pitch
- Lightweight and simple to install
- Install using 8, style 16d common nails (not included)
- Removable; no lasting damage to rooftop

The Malta Dynamics Single Use Roof Anchor is a handy addition to the roofer's toolbox. It can be easily bent over the peak of the roof or manipulated to match the pitch of your roof. Because of its versatility and durability, this adjustable pitch anchor creates a reliable tie-off point for your lifeline without causing lasting damage to the rooftop.

PRODUCT SPECIFICATIONS:

- Worker Capacity Range: 130-310 lbs.
- Min. Breaking Strength: 5,000 lbs.
- Materials: Alloy



PART #	DIMENSIONS	WEIGHT
A6318	13" x 3" x 2"	.9 lbs.

CONCRETE ANCHOR STRAPS



KEY FEATURES:

- Increased durability with heavy duty polyester web sheath
- The premium heavy duty sheath protects the inner core against abrasion and wearDiscrete and low profile design

The Malta Dynamics Concrete Anchor strap can be used as an anchor during building construction such as wood framework, rebar work, or pipe racking. These anchors are cost-effective and durable for multiple locations throughout construction phases.

PRODUCT SPECIFICATIONS:

- Worker Capacity Range: 130-310 lbs.
- Min. Breaking Strength: 5,000 lbs.
- Materials: Polyester



PART #	CONNECTOR	WEIGHT
A6400	Steel D-Ring	.6 lbs.
A6401	Web Only	.4 lbs.

5K SWIVEL ANCHOR



KEY FEATURES:

- Simple Mount and Bolt on System
- Easy Installation and Removal
- Swivels Full 360°

The 5K Swivel Anchor can be used on steel flanges. This anchor rotates 360 degrees, flips 180 degrees, and is zinc coated steel. Mounting hardware included. A7360 can be used for steel and wood, while the A7360C can be used for concrete substrates.

PRODUCT SPECIFICATIONS:

- Worker Capacity Range: 130-310 lbs.
- Min. Breaking Strength: 5,000 lbs.
- Materials: Zinc Coated Steel



PART #	DIMENSIONS	WEIGHT
A7360	7" x 4.5" x 2.5"	1.5 lbs.
A7360C	7" x 4.5" x 2.5"	1.7 lbs.

TRUSS ANCHOR



KEY FEATURES:

- Malta Dynamics' Signature Orange Color Increases Visibility
- Rotating Alloy Steel Attachment Point
- Includes 13 Wood Screws
- For Use on Normal 2"x4" Wooden Truss

The Malta Dynamics Truss Anchor is a fall protection solution for new construction or for work being performed in the attic space of an existing structure. Commonly used by electricians or solar installers, a truss/ attic anchor attaches to existing wood trusses providing a tie-off point in the event of a fall through the ceiling or below levels.

PRODUCT SPECIFICATIONS:

- Worker Capacity Range: 130-310 lbs.
- Min. Breaking Strength: 5,000 lbs.
- Materials: Powder Coated Steel & Alloy Steel



PART #	DIMENSIONS	WEIGHT
A8000	8" x 6" x 2"	2.4 lbs.

BILLBOARD ANCHOR



KEY FEATURES:

- Custom engineered for billboard use
- Discreet design for permanent installation
- Curved neck allows for anchorage on the front of the billboard without covering the advertisement

The Malta Dynamics Billboard Anchor has been 3rd party tested to OSHA regulations and is manufactured to attach perfectly to the back of most billboards. It features a curved neck that slightly hangs over the front of the billboard and can be used as a single anchor, or in sets of two anchors to create a horizontal lifeline.

PRODUCT SPECIFICATIONS:

- Worker Capacity Range: 130-310 lbs.
- Min. Breaking Strength: 5,000 lbs.
- Materials: Powder Coated Steel



PART #	DIMENSIONS	WEIGHT
BA1000	34" x 24" x 4"	60 lbs.

MALTA DYNAMICS BEAM STANCHIONS

Stable and structural supports for horizontal lifelines.

Temporary Horizontal Lifelines are a staple in many areas of construction. These are pre-tested and ready to provide fall protection for hundreds of feet. For long spans or custom configurations call (800)494-1840 to speak with an expert.



60' ADJUSTABLE HORIZONTAL LIFELINE SYSTEM



Complete 2 Person 60ft Adjustable Horizontal Lifeline System for workers accessing and performing work from elevated concrete beams or I-beams. Quick and easy set-up. System includes: Two (2) Stanchion Posts (P-00041-10) and One (1) Horizontal Lifeline Fall Protection Cable Assembly (P-00147-60). For temporary use only.

PART #	DIMENSIONS	WEIGHT
MDK-0060-C	15" x 20" x 5"	19.8 lbs.



MD POST FOR STEEL I-BEAMS



Stanchion post for clamping to steel I-beams – Fits flange thicknesses from 1/2" to 2 1/4". Fits flange widths from 8" to 22". Can be used as a single tie-off anchor point or as part of an MD Stanchion Post Horizontal Lifeline Fall Protection System.

PART #	DIMENSIONS	WEIGHT
P-00041-1	15" x 20" x 5"	.9 lbs.



MD POST FOR CONCRETE BEAMS



Stanchion post for bolting to concrete or steel beams. Max Flange 1/2" to 12" (steel). Can be used as a single tie-off anchor point or as part of an MD Stanchion Post Horizontal Lifeline Fall Protection System.

PART #	DIMENSIONS	WEIGHT
P-00041-10	15" x 30" x 5"	2.4 lbs.



HORIZONTAL LIFELINE CABLE ASSEMBLY



Horizontal Lifeline Fall Protection Cable Assembly attaches between either two MD posts for steel I-beams (P-00041-1) or between two MD posts for concrete beams (P-00041-10) to complete a two (2) person horizontal lifeline fall protection system. For temporary use only.

PART #	DIMENSIONS	WEIGHT
P-00147-60	10" x 10" x 5"	12.4 lbs.



INTERMEDIATE BY-PASS ADAPTOR



Intermediate by-pass adapter can be added to any MD post to help workers continue along the horizontal path of the i-beam or concrete beam they are walking on. The unique design keeps the systems horizontal cable in place while still allowing workers enough room to pass the snap hook of their lanyard through the intermediate adapter without ever needing to disconnect from the horizontal lifeline cable system. Additional posts are commonly used in areas where not much clearance exists from where workers are walking on the beams to an obstruction below, typically the ground. Reduces the amount of horizontal cable sag.

PART #	DIMENSIONS	WEIGHT
P-00149-3	5" x 5" x 5"	2.2 lbs.



TEMPORARY IN-LINE SHOCK ABSORBER



In-line shock absorber – Deploys when a fall occurs to dampen the impact load to MD I-beam or concrete stanchions.

PART #	WIDTH	WEIGHT
P-00039-1	10" x 20" x 5"	9.27 lbs.





TRIPOD



KEY FEATURES:

- Lightweight Aluminum Alloy
- Non-slip Hinged Feet
- Adjustable Leg Safety Chains
- Built-in Pulley and Eye Bolt
- Easily Portable Using Included Bag
- Head Locking Detent Balls
- Telescopic Legs for Adjustable Height

Our 'Groundhog' confined space rescue tripod is easy and quick to assemble with aluminum telescoping legs. It's designed to work with material or personnel and can be equipped with our 100' 3-way rescue SRL. Our tripods and accessories provide safe access and emergency rescue for confined spaces.

PRODUCT SPECIFICATIONS:

- Worker Capacity Range: 130-310 lbs.
- Min. Breaking Strength: 5,000 lbs.
- Materials: Aluminum Alloy



PART #	WEIGHT
R0006	75 lbs.

100' 3-WAY RECOVERY SRL



KEY FEATURES:

- 360° Swivel Top
- Handle for rescue retrieval
- Locking pin for fall arrest & winch mode
- Galvanized Steel Cable
- Snap hook and impact indicator included

The Malta Dynamics 100' 3-Way Recovery Self-Retracting Lifeline is built to be easy to handle, adjust, and install, it is both durable and dependable. With a quick-activating retrieval mechanism for emergency evacuation, you can expect superior performance and reliability. This block allows the fall to arrest and then easy hoisting of the worker with the help of its built-in winch mechanism.

PRODUCT SPECIFICATIONS:

- Worker Capacity Range: 130-310 lbs.
- Average Arresting Force: 900 lbs.
- Max. Arresting Distance: Under 54 in.
- Materials: Alloy & Galvanized Steel and High-Strength Polymer



PART #	LENGTH	WEIGHT
R0003	100'	40 lbs.

3-WAY RECOVERY SRL BRACKET



KEY FEATURES:

- Connected Locking Pin
- Pre-cut Slot for Rescue/Retrieval Winch
- Durable Unibody Design
- Anchors Rescue/Retrieval Winch Securely to Tripod

Use in conjunction with the 100' 3-Way SRL (R0003) for attachment on our Tripod. This adds fall arrest and a secondary retrieval option.

PRODUCT SPECIFICATIONS:

- Materials: Steel Plating



PART #	WEIGHT
R0008	8.6 lbs.

115' MATERIAL HANDLING WINCH



KEY FEATURES:

- Locking Pin Secures Winch in Place on Bracket
- Rotating Handle for Continued Winching
- Sturdy Design for Smooth Cable Control
- Super Durability
- Self-locking Snap Hook Included

Our standard winch is designed for personnel riding, material handling, rescue, and evacuation. It includes a 115-foot galvanized steel cable that can support a worker load from 130-310 lbs. The winch offers the ability to raise or lower a worker to safety or lock them in place. Once installed, the winch cable is fed through the head of the tripod and placed on the built-in pulley wheel.

PRODUCT SPECIFICATIONS:

- Max. Working Load: 300 lbs
- Materials: Galvanized Steel



PART #	WEIGHT
R0007	42.8 lbs.



The aluminum alloy tripod is built to support one worker up to 310 lbs. Our tripod with optional winch is designed for safe access and emergency rescue in confined spaces including sewers, wells, underground pipe, and tunnels.

MALTA DYNAMICS SAFETY HELMETS

Provide the ultimate head protection.

Protect your head from more than just falling objects. Lightweight, versatile, and tested for impact from front, back, side, and top, with a chin strap to keep your head protecting you from secondary impacts in an accident. Bulk discounts and custom logos are available.



TYPE 2 SAFETY HELMET



PART #	COLOR	VISOR	WEIGHT
HTB2000	Black	N/A	1.1 lbs.
HTBL2000	Blue	N/A	1.1 lbs.
HTG2000	Grey	N/A	1.1 lbs.
HTO2000	Orange	N/A	1.1 lbs.
HTR2000	Red	N/A	1.1 lbs.
HTW2000	White	N/A	1.1 lbs.
HTY2000	Yellow	N/A	1.1 lbs.
HTB2001	Black	Clear	1.3 lbs.
HTBL2001	Blue	Clear	1.3 lbs.
HTG2001	Grey	Clear	1.3 lbs.
HTO2001	Orange	Clear	1.3 lbs.
HTR2001	Red	Clear	1.3 lbs.
HTW2001	White	Clear	1.3 lbs.
HTY2001	Yellow	Clear	1.3 lbs.
HTB2002	Black	Tinted	1.3 lbs.
HTBL2002	Blue	Tinted	1.3 lbs.
HTG2002	Grey	Tinted	1.3 lbs.
HTO2002	Orange	Tinted	1.3 lbs.
HTR2002	Red	Tinted	1.3 lbs.
HTW2002	White	Tinted	1.3 lbs.
HTY2002	Yellow	Tinted	1.3 lbs.



The Malta Dynamics Type 2 Safety Helmets meet the ANSI standard Z89.1-2014 for Type 2 Class C Helmets. This means they're rated for impact to the top of your head as well as impact to the front, sides, and back of the head.

KEY FEATURES:

- Adjustable chin strap
- Comfort adjustable head band

PRODUCT SPECIFICATIONS:

- Materials: ABS



TYPE 1 SAFETY HELMET



PART #	COLOR	VISOR	WEIGHT
HTB1100	Black	N/A	1.1 lbs.
HTBL1100	Blue	N/A	1.1 lbs.
HTG1100	Grey	N/A	1.1 lbs.
HTO1100	Orange	N/A	1.1 lbs.
HTR1100	Red	N/A	1.1 lbs.
HTW1100	White	N/A	1.1 lbs.
HTY1100	Yellow	N/A	1.1 lbs.
HTB1101	Black	Clear	1.3 lbs.
HTBL1101	Blue	Clear	1.3 lbs.
HTG1101	Grey	Clear	1.3 lbs.
HTO1101	Orange	Clear	1.3 lbs.
HTR1101	Red	Clear	1.3 lbs.
HTW1101	White	Clear	1.3 lbs.
HTY1101	Yellow	Clear	1.3 lbs.
HTB1102	Black	Tinted	1.3 lbs.
HTBL1102	Blue	Tinted	1.3 lbs.
HTG1102	Grey	Tinted	1.3 lbs.
HTO1102	Orange	Tinted	1.3 lbs.
HTR1102	Red	Tinted	1.3 lbs.
HTW1102	White	Tinted	1.3 lbs.
HTY1102	Yellow	Tinted	1.3 lbs.



The Malta Dynamics Type 1 Safety Helmets meet the ANSI standard Z89.1-2014 for Type 1 Class C Helmets. This means they're rated for impact to the top of your head.

KEY FEATURES:

- Adjustable chin strap
- Comfort adjustable head band

PRODUCT SPECIFICATIONS:

- Materials: ABS



MALTA DYNAMICS HARD HATS

Tried and true head protection, made in the USA, and ready to protect your crew in cap style and full brim.

Our hard hats are made in the USA and available in cap-style or full brim in 7 colors. Customizable with your company logo, bulk discounts are available



CAP STYLE HARD HATS



PART #	SIZE	WEIGHT
HHB1004	Blue	.7 lbs.
HHO1004	Orange	.7 lbs.
HHR1004	Red	.7 lbs.
HHW1004	White	.7 lbs.
HHY1004	Yellow	.7 lbs.

The Malta Dynamics Cap Style Hard Hat is a standard cap style hard hat with 4-point ratchet suspension and accessory slots. The 4-point ratchet nylon suspensions are built with replaceable brow pads.

PRODUCT SPECIFICATIONS:

- Fits hat size 6.5-8
- Materials: Polyethylene



HARD HAT VISORS



KEY FEATURES:

- Perfect to enhance your comfort and safety
- Visor headgear or a hard hat visor carrier must be worn with the appropriate visor and ANSI approved eye wear for complete OSHA compliance

PART #	MATERIAL	WEIGHT
HHE840ME	Polyester	.24 lbs.
HH840T	Tritan	.23 lbs.
HH840M	Acetate	.24 lbs.

The Malta Dynamics line of Hard Hat Mounted Face Protection is designed specifically as an accessory to the Malta Dynamics' Hard Hat line. When job site applications demand both head and face protection our wide variety of products are compliant, safe, and durable. The Malta Dynamics flat acetate visor is to be used in conjunction with the Malta Dynamics brand face shield brackets to protect against light chemical splashes and impacts.

PRODUCT SPECIFICATIONS:

- Dimensions: 8" x 15"



FULL BRIM HARD HATS



PART #	COLOR	WEIGHT
HHB2004	Blue	.9 lbs.
HHBLK2004	Black	.9 lbs.
HHG2004	Grey	.9 lbs.
HHGR2004	Green	.9 lbs.
HHO2004	Orange	.9 lbs.
HHR2004	Red	.9 lbs.
HHW2004	White	.9 lbs.
HHY2004	Yellow	.9 lbs.

The Malta Dynamics Full Brim Hard Hat is a standard hard hat with full brim to protect you from the elements. The 4-point ratchet nylon suspensions are built with replaceable brow pads.

KEY FEATURES:

- Innovative suspension bends at flexible points for a better fit

PRODUCT SPECIFICATIONS:

- Fits hat size 6.5-8
- Materials: Polyethylene



HARD HAT BRACKETS



KEY FEATURES:

- Perfect to enhance your comfort and safety
- Visor headgear or a hard hat visor carrier must be worn with the appropriate visor and ANSI approved eye wear for complete OSHA compliance

PART #	COMPATIBLE	WEIGHT
HH300B	Cap Style	.2 lbs.
HH312B	Full Brim	.2 lbs.
HH400D	Cap Style	.13 lbs.

The Malta Dynamics line of Hard Hat Mounted Face Protection is designed specifically as an accessory to the Malta Dynamics' Hard Hat line. When job site applications demand both head and face protection our wide variety of products are compliant, safe, and durable. The Malta Dynamics flat acetate visor is to be used in conjunction with the Malta Dynamics brand face shield brackets to protect against light chemical splashes and impacts.

PRODUCT SPECIFICATIONS:

- Material: Nylon



FULL BRIM YELLOW HARD HAT W/VISOR



KEY FEATURES:

- Hard Hat Ratchet suspension ensures fast, easy size adjustments
- Equipped with cushion pillows and nape cushion for a snug, comfortable fit
- Durable face shield resists impact, chemicals, shattering, and high temperatures
- Discrete and low profile design

PART #	COLOR	WEIGHT
HHW2004-HH312B-HHE840ME	White	3 lbs.
HHY2004-HH312B-HHE840ME	Yellow	3 lbs.

Malta Dynamics has put together a hard hat visor kit that is designed to give full protection for both your head and face at the same time. Includes a 4 Pt. Ratchet Full Brim Style Hard Hat, and a full face visor with a bracket for attachment to the hard hat.

PRODUCT SPECIFICATIONS:

- Fits hat size 6.5-8
- Hat Material: Polyethylene
- Visor Material: Polyester
- Bracket Material: Nylon



MALTA DYNAMICS SAFETY GLASSES

Protect Your Valued Workers With Malta Dynamics' Selection of Safety Glasses

Safety glasses are required on virtually every construction or industrial site. Find value and comfort in our ever-growing line of safety glasses.



CLEAR FRAME SAFETY GLASSES



KEY FEATURES:

- Medium impact
- Scratch-Resistant
- Molded nose bridge
- Rimless lenses for easy cleaning

Malta Dynamics Clear Frame Safety Glasses consist of a lightweight, rimless design that provides all day user comfort. Thin, flexible temples provide a secure fit without uncomfortable pressure points.



PART #	PACK	WEIGHT
SG1012	12	.06 lbs. per pair

PRODUCT SPECIFICATIONS:

- Materials: Polycarbonate



TINTED FRAME SAFETY GLASSES



KEY FEATURES:

- Medium impact
- Scratch-Resistant
- 99.9% UV protection
- Molded nose bridge
- Rimless lenses for easy cleaning

Malta Dynamics Tinted Frame Safety Glasses consist of a lightweight, rimless design that provides all day user comfort. Thin, flexible temples provide a secure fit without uncomfortable pressure points. These safety glasses are tinted and provide 99% UV resistance.



PART #	PACK	WEIGHT
SG1112	12	.06 lbs. per pair

PRODUCT SPECIFICATIONS:



APEX SAFETY GLASSES

APEX CLEAR SAFETY GLASSES



KEY FEATURES:

- Anti-slip flexible temple tips
- Easy to clean design featuring top rim only
- Durable anti-scratch coating
- Anti-fog lenses
- Universal fit molded nose bridge
- Lightweight & comfortable

Malta Dynamics APEX Safety Glasses are ANSI impact rated to meet the ANSI/ISEA Z87.1-2020 standard. They feature a stylish modern design with curved lenses that contour to the shape of the eye and face for a superior fit and added protection. The large lenses give a full, clear view of surroundings while providing lightweight and comfortable eye protection.

PRODUCT SPECIFICATIONS:

- Lens Material: Polycarbonate
- Frame Materials: Plastic & Rubber



APEX TINTED SAFETY GLASSES



APEX INDOOR/OUTDOOR SAFETY GLASSES



MALTA DYNAMICS PPE

Stand out and be safe with our Hi-Vis clothing.

Protect yourself and be seen with our PPE. From basic to stylish and always a great value, our Fall Protection products aren't the only Field Tested, Field Approved safety products we have.



HI-VIS SAFETY LONG SLEEVE SHIRT



KEY FEATURES:

- Left Chest Pocket

PART #	SIZE	WEIGHT
SHL0011	S	.4 lbs.
SHL0012	M	.4 lbs.
SHL0013	L	.4 lbs.
SHL0014	XL	.4 lbs.
SHL0015	2XL	.4 lbs.
SHL0016	3XL	.4 lbs.

Be seen and be cool. Our hi-vis shirts are 100% polyester breathable mesh and resistant to shrinkage. The included pocket is a great place for us to put your company logo. Discounts are available for bulk orders.

PRODUCT SPECIFICATIONS:

- High Visibility Fluorescent Yellow
- Materials: 100% Polyester



HI-VIS SAFETY SHORT SLEEVE SHIRT



KEY FEATURES:

- Left Chest Pocket

PART #	SIZE	WEIGHT
SHS0011	S	.4 lbs.
SHS0012	M	.4 lbs.
SHS0013	L	.4 lbs.
SHS0014	XL	.4 lbs.
SHS0015	2XL	.4 lbs.
SHS0016	3XL	.4 lbs.

Be seen and be cool. Our hi-vis shirts are 100% polyester breathable mesh and resistant to shrinkage. The included pocket is a great place for us to put your company logo. Discounts are available for bulk orders.

PRODUCT SPECIFICATIONS:

- High Visibility Fluorescent Yellow
- Materials: 100% Polyester



HI-VIS SAFETY SURVEYOR VEST



KEY FEATURES:

- Zipper Front Closure
- Ultra-Cool Breathable Mesh Design
- ANSI Class 2 Hi-Vis

PART #	SIZE	WEIGHT
PPE-006	M	.6 lbs.
PPE-007	L	.6 lbs.
PPE-008	XL	.6 lbs.
PPE-009	2XL	.6 lbs.
PPE-010	3XL	.6 lbs.
PPE-011	4XL	.6 lbs.

Be seen in all conditions with our premium Surveyor Vest. It's got 7 pockets, straps for radios, and a zipper enclosure. Have us add your company logo, bulk discounts available.

PRODUCT SPECIFICATIONS:

- High Visibility Fluorescent Yellow
- Reflective Strips
- Materials: 100% Polyester



HI-VIS FIELD VEST



KEY FEATURES:

- Zipper Front Closure
- Ultra-Cool Breathable Mesh Design
- ANSI Class 2 Hi-Vis

PART #	SIZE	WEIGHT
V1501	M	.3 lbs.
V1502	L	.3 lbs.
V1503	XL	.3 lbs.
V1504	2XL	.3 lbs.
V1505	3XL	.3 lbs.

Be seen in all conditions with our Field Vest. It's made of breathable mesh with reflective stripes and 2 pockets and a zipper enclosure. Have us add your company logo, bulk discounts available.

PRODUCT SPECIFICATIONS:

- High Visibility Fluorescent Yellow
- Reflective Strips
- Materials: 100% Polyester



THIN WORK GLOVES



KEY FEATURES:

- ANSI Cut Level 5
- Polyurethane palm coating maintains dexterity while delivering an excellent grip

Comfortable, lightweight and durable cut resistant gloves are critical to maintaining safety in any work environment. Malta Dynamics made the work gloves that our crews asked for.

PART #	SIZE	WEIGHT
G6001	M	.2 lbs.
G6002	L	.2 lbs.
G6003	XL	.2 lbs.

PRODUCT SPECIFICATIONS:

- Coating: Polyurethane
- Shell Color: High Vis Yellow



THICK WORK GLOVES



KEY FEATURES:

- ANSI Cut Level 4
- Polyurethane palm coating maintains dexterity while delivering an excellent grip

Comfortable, warm and durable cut resistant gloves are critical to maintaining safety in cold weather Malta Dynamics made the work gloves that our crews asked for.

PART #	SIZE	WEIGHT
G7001	M	.4 lbs.
G7002	L	.4 lbs.
G7003	XL	.4 lbs.

PRODUCT SPECIFICATIONS:

- Coating: Polyurethane
- Shell Color: Black



MALTA DYNAMICS PPE

Stand out and be safe with our Hi-Vis clothing.

MALTA DYNAMICS COOLER/BAGS

Our ever-growing Personal Protective Equipment offering.



CORDED EARPLUGS



KEY FEATURES:

- Disposable Earplugs
- Individually Wrapped
- Includes Plastic Case

Malta Dynamics' Corded Earplugs are crafted with durable silicone to enhance your comfort and provide a solid fit when working on construction sites or near loud equipment. Each reusable earplug offers hearing protection up to NRR=25dB to block out harmful sounds commonly found on jobsites. This pack of 100 includes individually-wrapped corded earplugs and a convenient plastic carrying case.

PRODUCT SPECIFICATIONS:

- Hearing Protection up to NRR=25dB
- Materials: Silicone



PART #	PACK	WEIGHT
PPE-012	100	.2 lbs.

DISPOSABLE EARPLUGS



KEY FEATURES:

- Disposable Earplugs
- Individually Wrapped

Malta Dynamics' Uncorded Earplugs feature a lightweight design that includes a PU foam structure for added comfort. With hearing protection up to NRR=33dB, these uncorded earplugs are perfect for construction sites and maintenance areas where workers are exposed to loud equipment. Each pair of uncorded earplugs are individually wrapped and can be disposed of easily after use.

PRODUCT SPECIFICATIONS:

- Hearing Protection up to NRR=33dB
- Materials: PU foam



PART #	PACK	WEIGHT
PPE-013	200	.2 lbs.



COOLER BAG



KEY FEATURES:

- Double Decker zipper
- Exterior Zipper Pocket
- Padded Carry handles
- Shoulder Strap
- Premium multi-layer insulation
- Welded seam leak-proof liner

Malta Dynamics' soft cooler is tough enough for the job site with tough a leak-proof interior liner. The insulation is guaranteed to keep your multi-layer contents cold for days. The carry handles and shoulder straps also make it easy to take wherever you need. These coolers are customizable with your company logo as well.

PRODUCT SPECIFICATIONS:

- Materials: 600 D Nylon



PART #	DIMENSIONS	WEIGHT
CL0001	24"x11"x15"	2.7 lbs.

EQUIPMENT PRO BAG



KEY FEATURES:

- Fits Safety Gear for 1 Worker

The Malta Dynamics Equipment Pro Bag makes it easy to tote your gear to and from the jobsite. It's designed for easy access to equipment and personal items. Two top handles as well as a shoulder strap keep it comfortable for carrying.

PRODUCT SPECIFICATIONS:

- Materials: 100% Polyester



PART #	DIMENSIONS	WEIGHT
K1001	16" x 11.5"x 11.5"	.6 lbs.

EQUIPMENT DUFFLE BAG



KEY FEATURES:

- Hydrosshield water-resistant base will protect your stuff from a wet field or gym floor
- Adjustable shoulder strap

The Malta Dynamics Equipment Duffle Bag is perfect for harnesses, lanyards or other small fall protection equipment, this carry bag keeps your equipment mobile. The Equipment Bag has two convenient carry handles and a shoulder strap.

PRODUCT SPECIFICATIONS:

- Materials: 100% Polyester
- Made with 50% recycled material



PART #	DIMENSIONS	WEIGHT
K1002	18" x 10" x 10"	.3 lbs.

MALTA DYNAMICS GUARDRAIL/KITS

Putting the right gear together for your crew

GUARDRAIL



KEY FEATURES:

- Compatible with 2x4 construction grade lumber for top-rail, midrail, and toe-board installation
- Secure posts to jobsite edge with 11 Screws (fasteners not included)
- Posts are removable and reusable
- Posts can be installed up to 8' apart



PART #	PACK	WEIGHT
TR1000	1	6.1 lbs.
TR1000-5	5	30.5 lbs.

The Malta Dynamics Temporary Guardrail System is a user-friendly and lightweight solution to prevent workers from falling. When disassembled, the posts can be easily stacked and transported by hand. The OSHA Compliant Temporary Guardrail Posts are easy to configure around the leading edges in your workspace and can be placed to suit unique jobsite applications. Perfect for use on wood or concrete.

PRODUCT SPECIFICATIONS:

- Worker Capacity Range: 130-310 lbs.
- Materials: Carbon Steel



SAFETY KITS

Our fall protection kits are meant to give you the highest quality solutions at the most affordable price. We have convenient, pre-made, all-purpose kits for roofers, personal fall arrest systems and horizontal lifelines that include everything you need for most general applications—all in one container or carry bag. You can build your own personal fall protection or roofer's kit by choosing the harness and connector sizes and models that meet your needs. Assembling your personal fall protection system and keeping your workers safe has never been easier or more affordable.



Contact us at sales@maltadynamics.com or (800) 494-1840 to build your own custom Kit.



WORK CONFIDENTLY AT HEIGHTS



At Malta Dynamics, our mission is for everyone to come home safe at the end of the work day. Fall protection systems alone do not guarantee safety for your workers. How you use the equipment and train with the systems also matters.

We have developed several resources for you and your team so you can work confidently at heights. From fall protection plans that you can customize for your crew to instructions and tips related specifically to our products, we have you covered.

Browse and download our free resources below — and shop our online store or call us at (866) 916-3203 for all your fall protection and safety gear needs.



SAFETY PLAN TEMPLATES



WEBINARS



VIDEOS



INFOGRAPHICS



POSTERS



INSPECTION FORMS



FIELD TESTED FIELD APPROVED

maltadynamics.com

SITE

www.MaltaDynamics.com

CONTACT

Phone : 800-494-1840

Mail : info@MaltaDynamics.com

ADDRESS

210 13th Street
Malta, OH 43758



SCAN:

To view products
not currently found
in this catalog.