

X SERIES

MOBILE FALL PROTECTION
BY MALTA DYNAMICS

MALTA
DYNAMICS



SCAN: Find videos, manuals, and more about this product on our website.

INDUSTRIES

- Power Generation
- Military
- Manufacturing
- Aviation
- Steel Erection
- Utilities



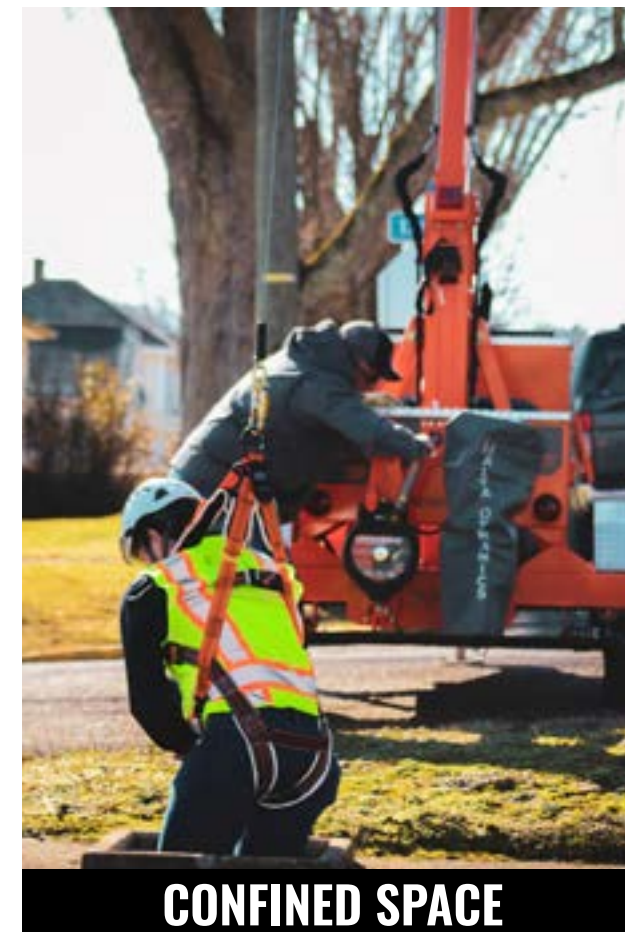
SCAN: Find videos, manuals, and more about this product on our website.

REAL WORLD FALL PROTECTION, PRACTICAL, PROVEN, AND FAST.

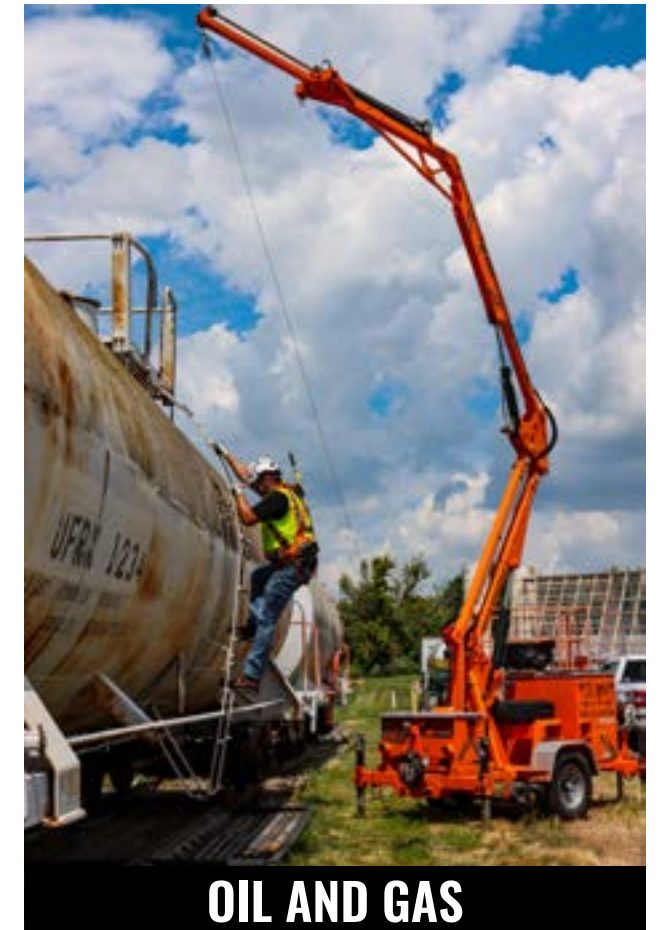
Fall Protection remains the top of OSHA's list for fines, violations, and work-related deaths. Malta Dynamics' line of mobile fall protection devices are engineered, tested, and proven to provide superior fall protection anchorage for a wide variety of fall hazards. When you don't know where to anchor, an XSERIES product can provide safe anchorage where others can't. We've increased our offering of products to cover even more fall hazards. [Call or click to speak to an expert today.](#)



CONSTRUCTION



CONFINED SPACE



OIL AND GAS



AND THE LIST GOES ON!

EDGE GRABBER

ENGINEERED DAVIT ANCHORS



SCAN: Find videos, manuals, and more about this product on our website.



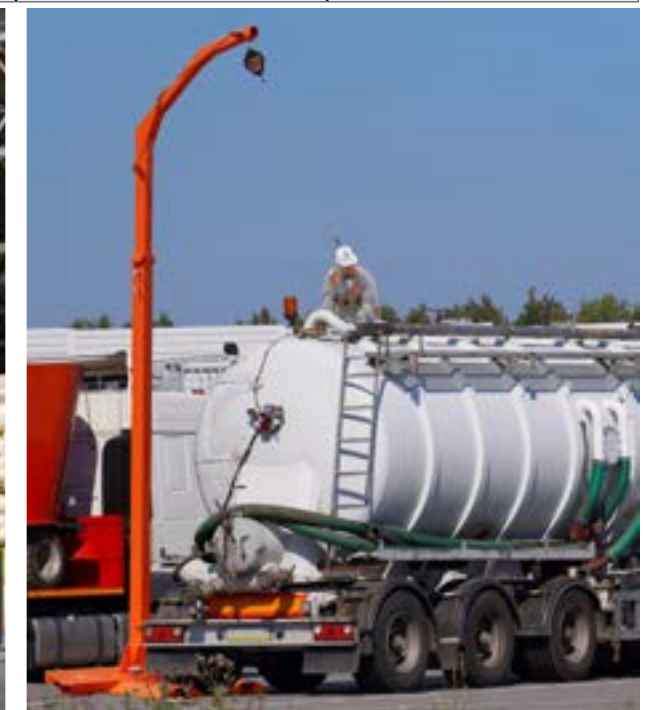
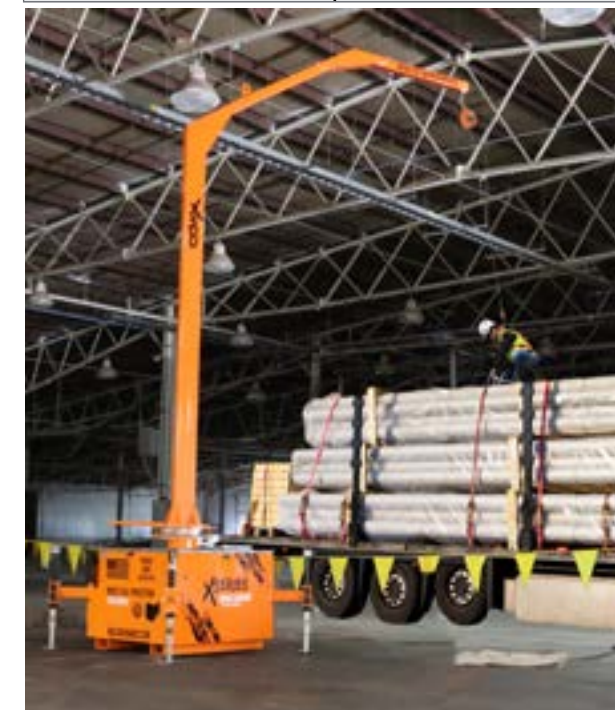
Model X250	
Safety Standards	
OSHA Fall Arrest Standards	
Applicable Fall Arrest Standards set forth in ANSI Z359.6	
General	
Weight	2320 lbs.
Frame Width	5'6" (1.7m)
Overall Length	13' (4m)
Max. Arm Reach Out	6'3" (1.9m)
Max. Anchor Point capacity	310 lbs.
Max. Allowable Users	2



SCAN: Find videos, manuals, and more about this product on our website.



Model	X500	X525	X550
Safety Standards			
OSHA Fall Arrest Standards			
Applicable Fall Arrest Standards set forth in ANSI Z359.6			
General			
Weight	5950 lbs.	1784 lbs.	2271 lbs.
Max. Working Height	20' (6.7m)	25' (7.6m)	22' (6.7m)
Frame Width	4'10" (1.5m)	3' (.9m)	7'5" (2.3m)
Working Frame Width	6' 3" (1.9m)	3' (.9m)	7'5" (2.3m)
Overall Length	13' (4m)	11' 1" (3.4m)	11' 3" (3.4m)
Max. Arm Reach Out	10' (3m)	9'7" (2.92m)	7'6" (2.3m)
Max. Anchor Point capacity	310 lbs.	310 lbs.	310 lbs.
Max. Allowable Users	1	1	1



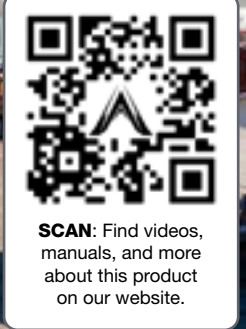
MOBILE GRABBERS



Model	X1240	X1250	X1260	X1270
Safety Standards				
OSHA Fall Arrest Standards				
Applicable Fall Arrest Standards set forth in ANSI Z359.6				
General				
Weight	5900 lbs.	5900 lbs.	5940 lbs.	6700 lbs.
Max. Working Height	30' (9.1m)	34' (10.4m)	34' (10.4m)	45' (13.7m)
Min. Working Height	2' (.6m)	2' (.6m)	2' (.6m)	2' (.6m)
Max. Folded Height	8'1" (2.6m)	8'1" (2.6m)	8'1" (2.6m)	8'3" (2.5m)
Frame Width	5'9" (1.8m)	5'9" (1.8m)	5'9" (1.8m)	5'9" (1.8m)
Working Frame Width	5'9" (1.8m)	5'9" (1.8m)	5'9" (1.8m)	10'9" (3.3m)
Overall Length	15'6" (4.7m)	15'6" (4.7m)	15'6" (4.7m)	20'10" (6.4m)
Max. Arm Reach Out	4'5.5" (1.4m)	9'9.5" (3m)	9'9.5" (3m)	10'4" (3.1m)
Max. Anchor Point capacity	310 lbs.	310 lbs.	310 lbs.	310 lbs.
Max. Allowable Users	2	3	5	2
Towing				
Max. Towing Speed	Posted Highway Speed	Posted Highway Speed	Posted Highway Speed	Posted Highway Speed
Axle	7000 lbs. Torsion Axle w/Electric Brakes	7000 lbs. Torsion Axle w/Electric Brakes	7000 lbs. Torsion Axle w/Electric Brakes	7000 lbs. Torsion Axle w/Electric Brakes
Tires	225/70/R15 Radials	225/70/R15 Radials	225/70/R15 Radials	225/70/R15 Radials
Receiver	2-5/16" Ball	2-5/16" Ball	2-5/16" Ball	2-5/16" Ball
Trailer Plug Wiring	7-Pole Blade Style lead	7-Pole Blade Style lead	7-Pole Blade Style lead	7-Pole Blade Style lead
Operation				
Actuating Method	Electric-driven Hydraulic system	Electric-driven Hydraulic system	Electric-driven Hydraulic system	Electric-driven Hydraulic system
Controls	Remote (15 ft. cord length)	Remote (15 ft. cord length)	Remote (15 ft. cord length)	Remote (15 ft. cord length)
Power Source	12 volt Battery (210 Amp hour rating) w/30A Fuse & Battery Guage	12 volt Battery (210 Amp hour rating) w/30A Fuse & Battery Guage	12 volt Battery (210 Amp hour rating) w/30A Fuse & Battery Guage	12 volt Battery (210 Amp hour rating) w/30A Fuse & Battery Guage
Charging System	110 Volt quick Smart Charger with Cord	110 Volt quick Smart Charger with Cord	110 Volt quick Smart Charger with Cord	110 Volt quick Smart Charger with Cord
Outrigger System	Four (4) Manually Adjustable Jacks	Four (4) Manually Adjustable Jacks	Four (4) Manually Adjustable Jacks	Four (4) Manually Adjustable Jacks
Hydraulics				
Fluid Type	Mobil DT10 Excel 22	Mobil DT10 Excel 22	Mobil DT10 Excel 22	Mobil DT10 Excel 22
Fluid Capacity	12.5 Gallons	12.5 Gallons	12.5 Gallons	12.5 Gallons



Model	X1000	X1000E
Safety Standards		
OSHA Fall Arrest Standards		
Applicable Fall Arrest Standards set forth in ANSI Z359.6		
General		
Weight	2200 lbs.	2900 lbs.
Max. Working Height	22' (6.7m)	22' (6.7m)
Min. Working Height	17' (5.18m)	17' (5.18m)
Max. Folded Height	7'10" (2.38m)	7'10" (2.38m)
Frame Width	5'8" (1.73m)	5'8" (1.73m)
Overall Length	9'7" (2.92m)	9'7" (2.92m)
Max. Arm Reach Out	3" (.91m)	3" (.91m)
Max. Anchor Point capacity	310 lbs.	310 lbs.
Max. Allowable Users	2	2
Towing		
Max. Towing Speed	Posted Highway Speed	Posted Highway Speed
Axle	-	-
Tires	225/70/R15 Radials	225/70/R15 Radials
Receiver	2-5/16" Ball	2-5/16" Ball
Trailer Plug Wiring	4-Pole Blade Style lead	4-Pole Blade Style lead
Operation		
Actuating Method	Manual Hydraulic system	Electric-driven Hydraulic system
Controls	-	Remote (15 ft. cord length)
Power Source	-	12 volt Battery (210 Amp hour rating) w/30A Fuse & Battery Guage
Charging System	-	110 Volt quick Smart Charger with Cord
Outrigger System	Four (4) Manually Adjustable Jacks	Four (4) Manually Adjustable Jacks
Hydraulics		
Fluid Type	Mobil DT10 Excel 22	Mobil DT10 Excel 22
Fluid Capacity	-	12.5 Gallons





RESCUE/RETRIEVAL KIT

This optional package helps to satisfy the OSHA requirement for rescue/retrieval options for confined spaces. The Rescue/Retrieval Kit allows an attendant to rescue a worker in need by raising or lowering (bi-directional winching capabilities) them to a safe level. (R1000)



SOLAR PANELS

Sustain power to the unit maintenance-free by adding high efficiency solar panels. The 60-watt crystalline solar panels are weatherproof and rugged for superior durability to allow extended, worry-free use. (S1000)



HYDRAULIC JACKS

The XSERIES Mobile Grabber comes standard with quick working drop jacks, but if a powered option is preferred, you can lower and level your XSERIES Mobile Grabber with hydraulic powered jacks. This option has an additional external control box. (X-JACKS)



SOLID TIRES

These poly-filled tires ensure you never have a flat if your XSERIES Mobile Grabber does not travel on a road. This option is perfect for environments with hot metal/debris as well. (SPT1000)



STROBE LIGHT

Certain work environments require a strobe light to ensure awareness of work equipment. This is great for aviation, or inside a factory while moving and positioning your XSERIES Mobile Grabber. (X-STROBE)



WIRELESS OPTION

Get all the functions of the standard corded remote in a compact wireless control that includes all the needed safety features and gives seamless, instant control of the unit with a range of up to 100'. (W1000)



GROUNDING LUG

There are 4 possible locations on the XSERIES Mobile Grabber to mount our electrical grounding lug. Ensure electrical safety by adding this option. (GR1000)



GENERATOR MOUNT

Bring power to your work area with our generator mount tray. Made to fit common 2000 watt generators, this sleek tray allows you to power tools on site, or provide your XSERIES Mobile Grabber a quick charge. (X-GENMOUNT)



XSERIES GO

Add independent mobility for finer positioning at your work site. This system adds two independent electric motors to your unit that drive its wheels, allowing you to position the XSERIES Mobile Grabber without a vehicle attached. (M1000)



SPARE TIRE

It never hurts to have a spare! Our Spare Tire Kit contains the spare tire and all needed hardware to be mounted to any existing X1200 series model, and can be easily installed with a few hand tools. (ST1000)

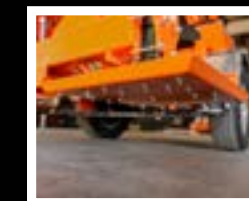


SCAN: Find videos, manuals, and more about this product on our website.



LED LIGHT

With the LED light add-on, you can provide overhead lighting to shine bright in areas like confined spaces, nighttime jobsites, or in low light working conditions. This option features two lights on top of the XSERIES mast to provide 360 degrees of lit space.



ICE PADS

With the ice pads add-on for the XSERIES, you can add oversized studded outrigger feet for increased traction in snow and ice. The ice pads are crafted with sturdy all-steel studs and are a must have for colder climates where the XSERIES will be used in snowy conditions.



LOCKOUT SWITCH

Add the ability to lockout or tagout the machine for work facilities that require it. Located in the rear motor compartment of the unit, the convenient turn style knob is used to safely ensure that the machine cannot be powered on or moved while work is being performed.



Malta Dynamics partnered with the National September 11 Memorial & Museum to build a custom XSERIES Mobile Fall Protection System to make it easier and safer for the engineers to maintain the Memorial. The twin reflecting pools, located where the Twin Towers once stood, feature the largest manmade waterfalls in North America.

The unit is being used to clean the Memorial Pool waterfall weirs, plaza-level troughs and pavilion entrance glass canopy. The maintenance team also uses the XSERIES to remove coins stuck between stones in the pool, maintain the waterfall weir heat trace system and replace the plaza light pole fixtures and bulbs.

ABOUT MALTA DYNAMICS

We are a full-service manufacturing company specializing in fall protection solutions. We design, engineer and manufacture safety products to serve our customers in construction, aviation, manufacturing, warehousing, masonry, and more.

Our team has worked in these industries for more than three decades, and we also use the equipment we offer. We've created the safety equipment and services that we wish we had 30 years ago. We offer high-quality safety equipment that exceeds OSHA requirements, rent and sell fall protection solutions, and provide services and equipment backed by a management team and a sales force that know your industry and understand your needs.

The idea for Malta Dynamics began with Damian Lang, who started as a mason more than three decades ago and founded Lang Masonry Contractors, Inc. His masonry business began in a small community in southeastern Ohio. Living in a small town, Damian employed as many local workers as he could. The people he worked with on the job were more than just employees and coworkers—they and their families were people he knew personally.

It wasn't long before his workers began taking on challenging jobs that involved working at heights. Damian knew the risks of these tough jobs and had read the statistics about how many injuries and fatalities from falls occur in the U.S. each year. He couldn't imagine such a tragedy affecting his team and his community—he wanted to keep his people safe.

He began building safety and fall protection equipment and training programs for his own workers. In the process, he saw an unmet need in the industry in general—there were lots of other people who needed quality, durable, affordable safety equipment.



“Visitors sometimes leave coins and other items between the stones that have to be removed. The weirs must be cleaned and the patina must be maintained. Work that requires going behind the parapet. You have to be tied off. This is a proactive piece of equipment. It is going to prevent accidents.”

Anthony Lo Casto

National September 11 Memorial & Museum Chief Engineer



SCAN: Find videos, manuals, and more about this product on our website.



SCAN: Find videos, manuals, and more about this product on our website.



SCAN: Find videos, manuals, and more about this product on our website.

XSERIES

MOBILE FALL PROTECTION
BY MALTA DYNAMICS



MALTA
DYNAMICS

800-494-1840
MaltaDynamics.com
210 13th St.
Malta, OH 43758 USA

Latest Revision: December 2022